



KCP PUMPS PLACING BOOMS

ACCURATE PLACEMENT EFFICIENT COMPLETION

High-Performance, Reliable KCP Placing Booms Built for High-Rise Construction

KCP

WE ARE CREATING A BETTER KCP
THROUGH INNOVATION AND CHALLENGES



WORLD CLASS 300



ISO 9001, ISO 14001

KCP PUMPS PLACING BOOMS

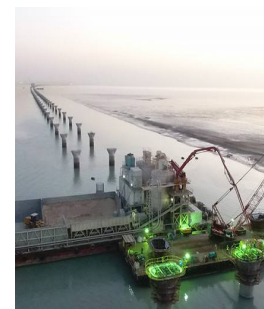
KCP Placing Booms are engineered for precision and efficiency in high-rise construction. With a proven track record of excellence across global projects, our products are the reliable choice for builders worldwide. Combining innovative design with robust performance, KCP Placing Booms deliver outstanding results while minimizing maintenance and operational costs.

Proven Excellence in Global High-Rise Projects

KCP Placing Booms have played a vital role in iconic construction projects worldwide. From skyscrapers to large-scale infrastructure developments, our equipment has proven its value time and time again. Key projects include:

Project 01. Kuwait Jaber Causeway

The Sheikh Jaber Causeway project involves the construction of a 36.1 km bridge (27.5 km offshore, 8.6 km onshore) with 6 lanes in each direction (8 lanes including emergency lanes), artificial islands of 330,000 m², and associated buildings.



Deployed
Equipment

6 Placing Booms
KB-M36R

10 Trailer Pumps
KTP 2210

Project 02. USA Galena Creek Bridge

The Galena Creek Bridge, reaching a height of approximately 90 meters, is the longest and highest bridge in Nevada. In this project, a 100-meter tower master was used to install the world's longest KCP 60-meter placing boom.



Deployed
Equipment

1 Placing Booms
KB-M60RZ

1 Concrete Pumps
KCP65ZS6

Project 05. Al-Zour LNG Import Terminal

The Kuwait Al-Zour LNG Terminal project is the largest LNG tank construction project in the world, involving the construction of eight LNG storage tanks with a capacity of 225,000 m³ each on a reclaimed land site in the Al-Zour area, 90 km south of Kuwait City.



Deployed
Equipment

9 Placing Booms
KB-M56RZ

1 Concrete Pumps
KCP75ZS5

Project 03. Malaysia RGT-2 LNG Tank

The Regasification Terminal (RGT-2) is part of Malaysia's plan for a reliable natural gas supply, serving the RAPID refinery, Penang Power Plant, and PGU grid. It will have an annual capacity of 5 million tons, with two LNG storage tanks of 200,000 m³ each.



Deployed
Equipment

3 Placing Booms
KB-M42RZ

1 Placing Booms
KB-M52RZ

Project 04. Qatar LNG NFXP EPC-2

Samsung C&T Construction Division has won a solo bid for the Qatar LNG export terminal construction project, worth a total of 1.85 trillion won. This project includes the deployment of eight KCP placing booms and five trailer pumps.



Deployed
Equipment

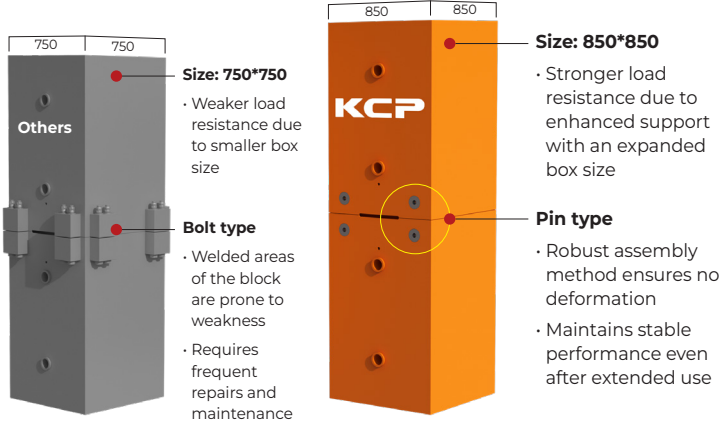
8 Placing Booms
KB-M56RZ

5 Trailer Pumps
KTP 2210

Features

Stability

- ▶ Pin-type mast design ensures stability during operation and simplifies assembly.
- ▶ Expanded box dimensions increase mast durability, ensuring safe and efficient use for large placing booms.
- ▶ The mast structure minimizes interference with surrounding frameworks during climbing.



Performance

- ▶ Optimized for high-rise concrete placement, ensuring consistent performance even in demanding environments.
- ▶ Seamless integration with KCP's trailer pumps for improved operational synergy.



Pumping unit of KCP's Trailer pumps

Open loop hydraulic system

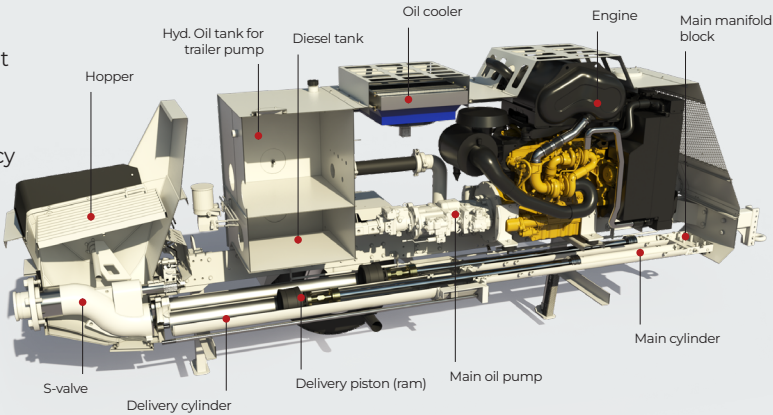
The open hydraulic system has a simple structure, making it easy to maintain, and its PTO power transmission is highly effective, enabling it to pump various types of concrete powerfully even at low RPM. Additionally, its power efficiency reduces heat generation and wear, resulting in an extended service life.

- Easy maintenance
- Low maintenance costs
- Reduce electrical circuits
- Strong pumping performance
- Oil filtering
- Strong durability

Specification

Model	2812	2210	1714	1310	0706
Maximum output	78 m³/h	105 m³/h	88 m³/h	64 m³/h	65 m³/h
Concrete pressure	285 bar	224 bar	172 bar	126 bar	70 bar
Stroke per minute	23	31	26	24	34
Main cylinder	Ø180 / Ø130×1800ST	Ø160 / Ø90×1800ST	Ø140 / Ø80×1800ST	Ø120 / Ø70×1400ST	Ø90/ Ø55×1100ST
Concrete cylinder	Ø200×1800ST	Ø200×1800ST	Ø200×1800ST	Ø200×1400ST	Ø200×1100ST
Hopper capacity	0.6m³	0.6m³	0.6m³	0.6m³	0.5 m³
S-tube	Ø200×Ø150	Ø200×Ø180	Ø200×Ø180	Ø200×Ø180	Ø200×Ø180
Hydraulic pump	KAWASAKI 280DT	KAWASAKI 280DT	KAWASAKI 200DTH	KAWASAKI 200S	KAWASAKI 117S
Engine	DOOSAN-PU180TI	DOOSAN-PU158TI	DOOSAN-PU126TI	DOOSAN-PU086T	CAT-C3.6(STAGES)
Engine rpm	1900 rpm	2000 rpm	1800 rpm	1900 rpm	1975 rpm
Vertical distance	405 m	315 m	245 m	180 m	100 m
Horizontal distance	710 m	550 m	430 m	315 m	175 m
Max. aggregate size	40 mm	40 mm	40 mm	40 mm	40 mm

• Photos and diagrams are for illustration purposes only. / • Equipment specifications are subject to change due to truck configuration and product improvements.



Durability

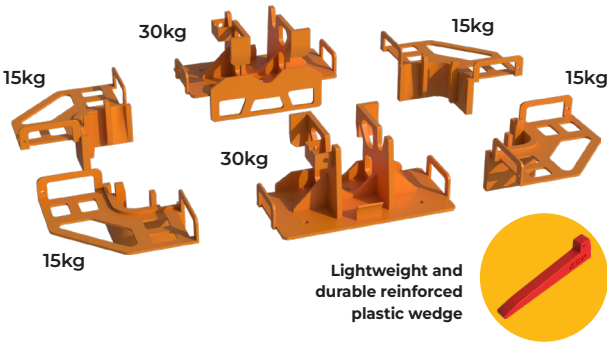
- ▶ Rugged construction with a robust MAST design enhances strength and long-term reliability.
- ▶ Designed to withstand the challenges of large-scale projects with reduced failure rates.



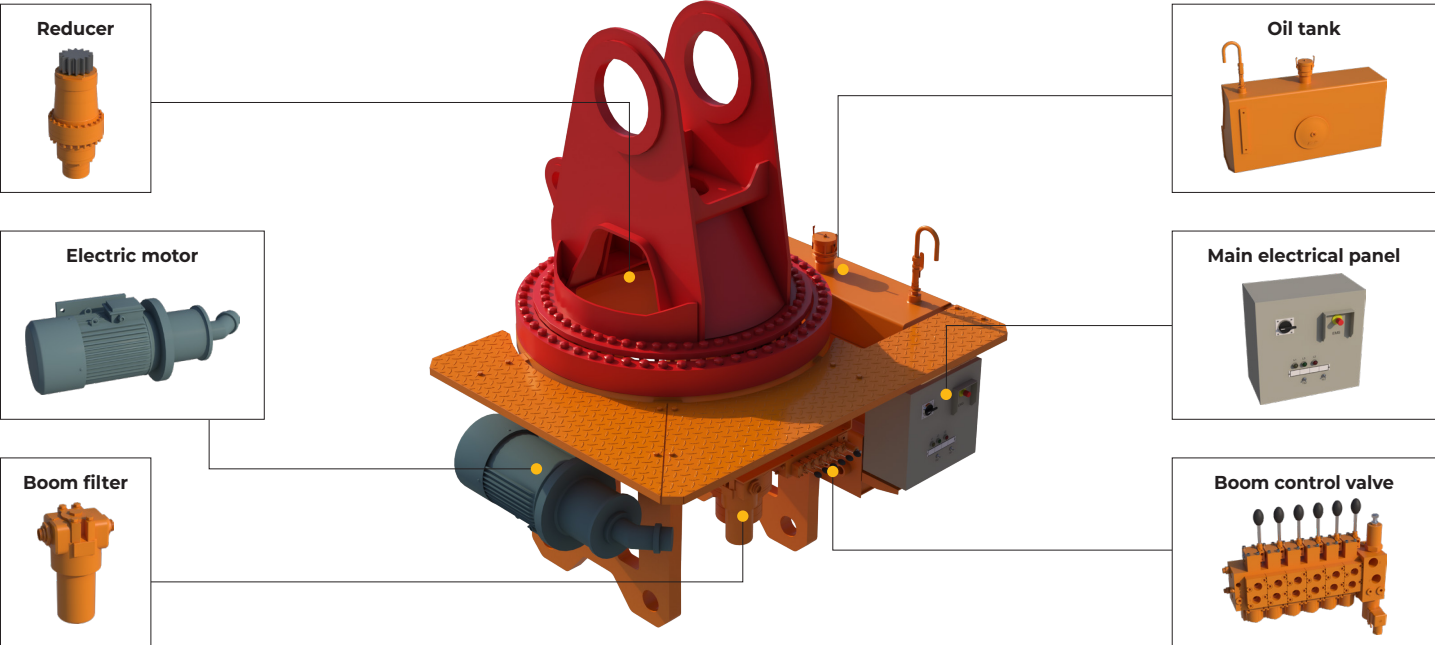
Ease of Installation and Maintenance

- ▶ Simplified and modular climbing structure reduces weight significantly, requiring only two workers for installation and transport.
- ▶ Components like wedges are redesigned with lightweight plastic instead of steel for easier handling.
- ▶ Centralized design with key components located at the base simplifies control and inspection.
- ▶ Boom rotation operates without interference, ensuring smooth and efficient placement during operations.

Total: 120kg



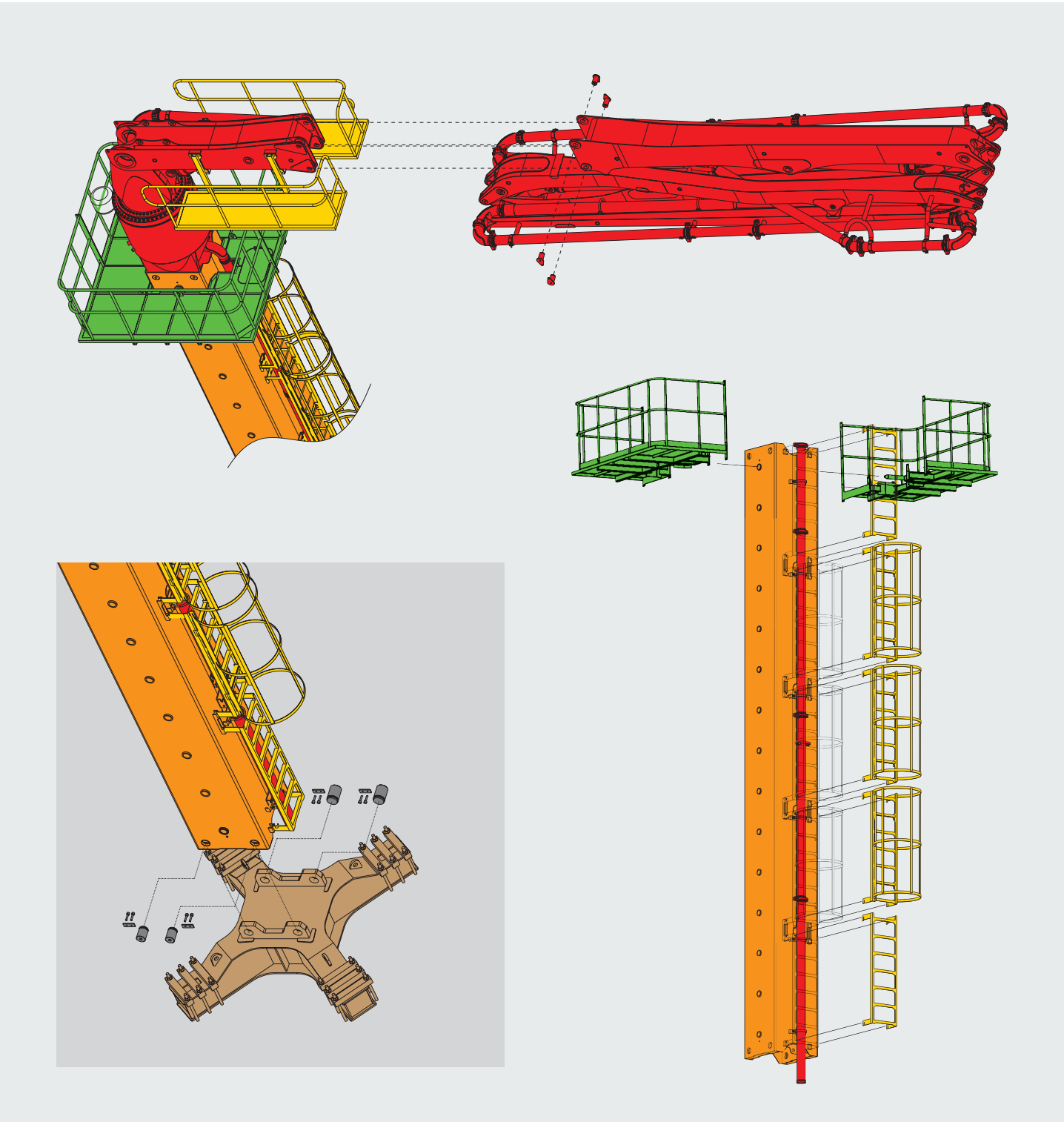
Centralized design



Fast and Efficient High-Rise Pouring Solution

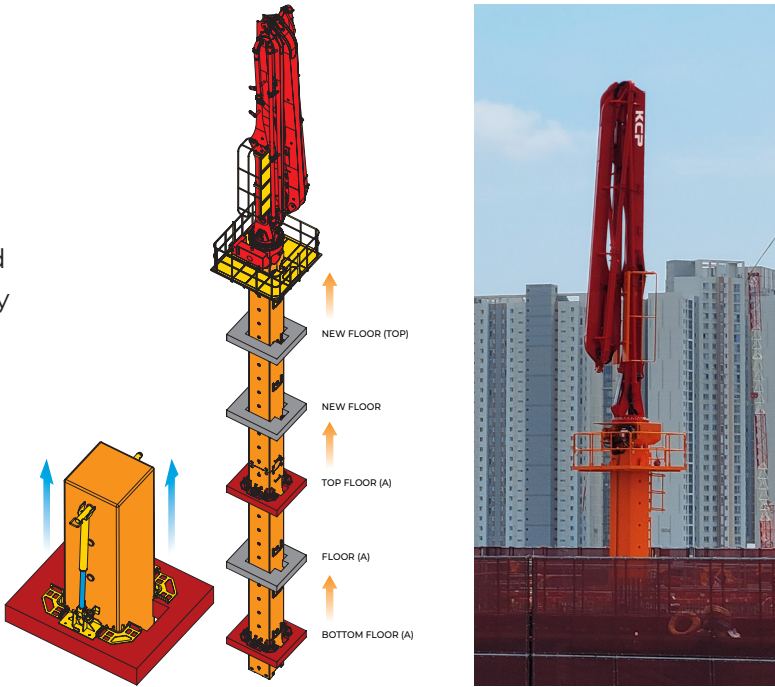
Modular Design for Quick Installation and Dismantling

The KCP Placing Boom features a modular design that allows each component to be independently assembled and disassembled. This makes installation and dismantling on-site quick and easy, reducing work time and maximizing efficiency.



Optimized High-Rise Concrete Placement with the Climbing Process

KCP's climbing process delivers exceptional performance in high-rise construction projects. The hydraulic system allows the tubular column to ascend step by step, enabling precise and safe concrete placement with minimal manpower. Moreover, the climbing process can operate independently, even in environments with limited crane availability, ensuring flexibility and efficiency on the job site. This process maximizes operational efficiency and meets the diverse demands of high-rise construction, offering the ideal solution for challenging projects.



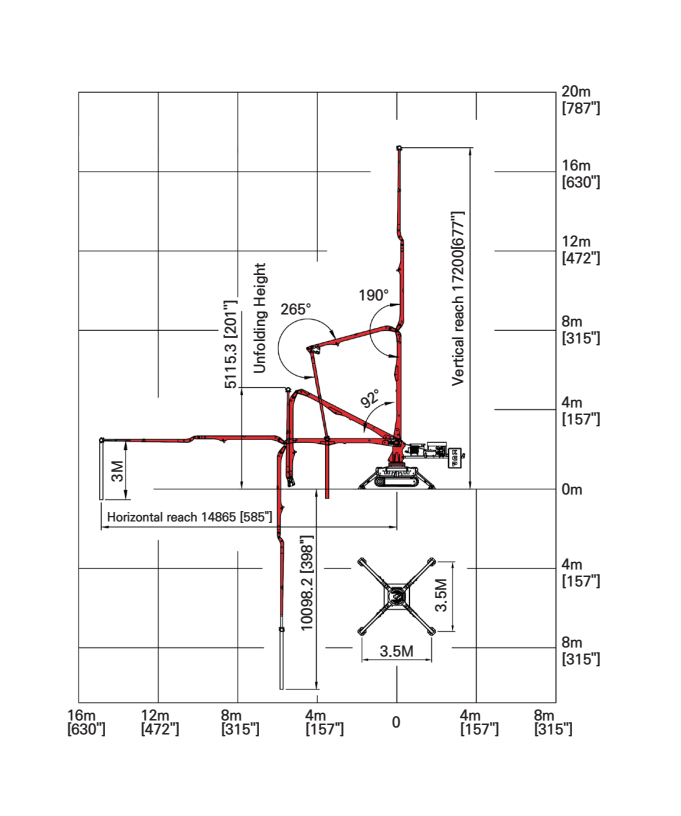
Flexibility for Various Work Environments

The KCP Placing Boom is adaptable to a wide range of construction site conditions. It is especially effective in narrow spaces or around complex structures, ensuring smooth operation even in challenging environments.

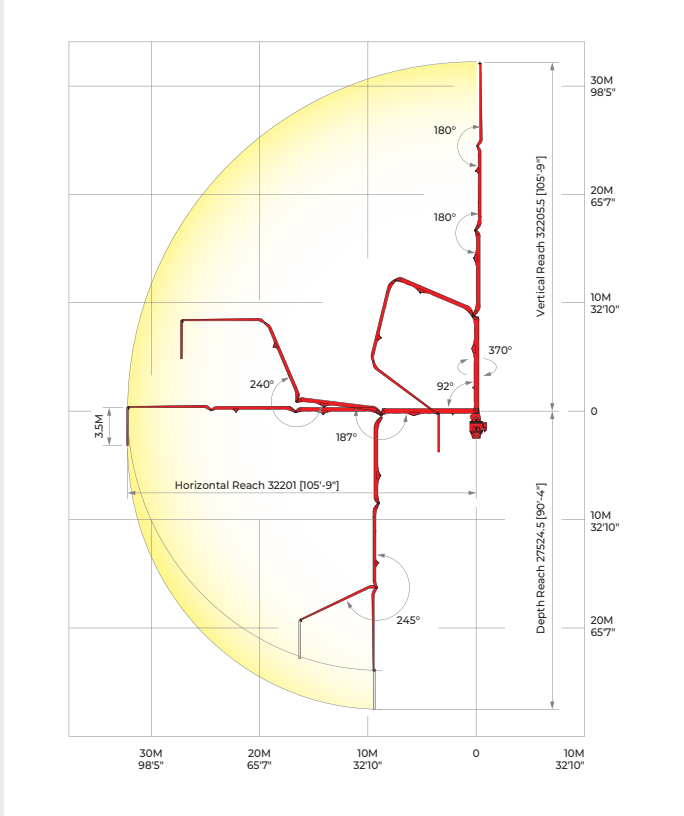


Representative Model Working Diagram

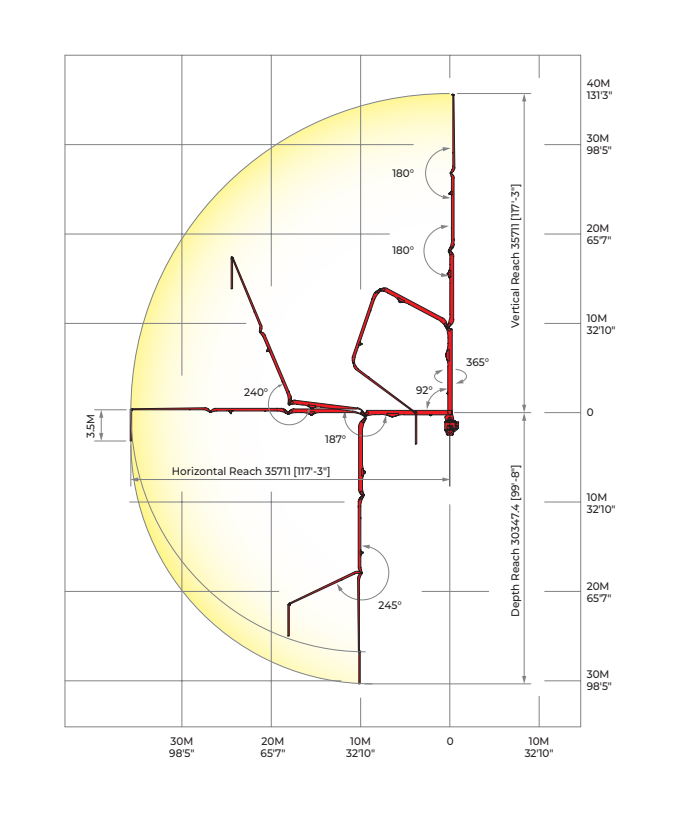
KS-M15Z



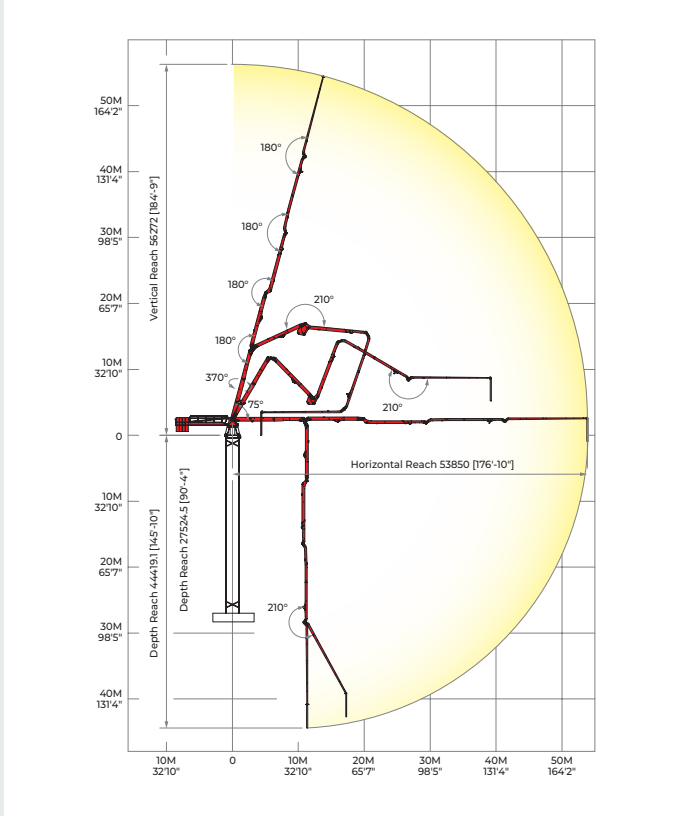
KB-M32R



KB-M36R



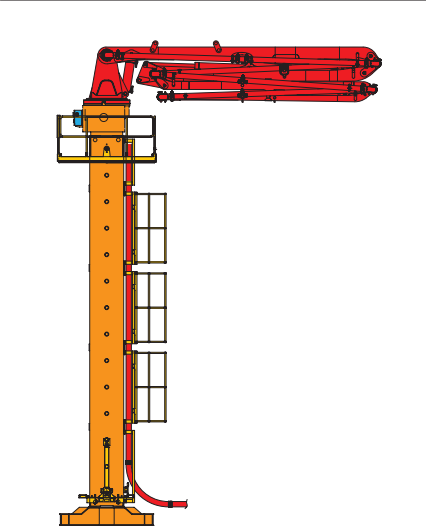
KB-M56RZ



► Photos and drawings are for illustrative purpose only. / ► Right to make technical amendments reserved. / ► Both Rexroth and Kawasaki pump cell available. / ► Dimension will vary with different truck makes, models and specifications. / ► Maximum theoretical values listed.

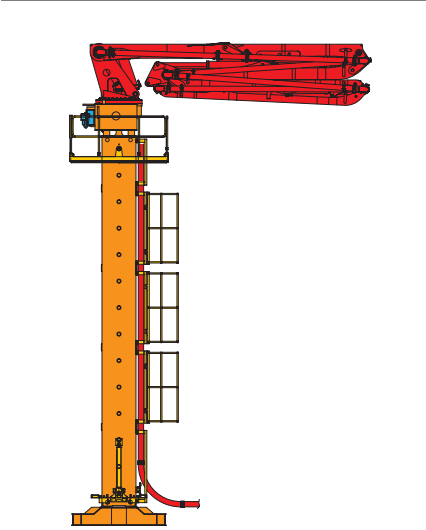
KCP PUMPS PLACING BOOMS

KB-M24Z



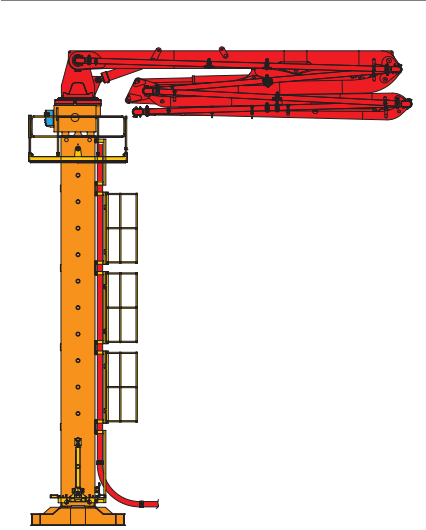
Boom type	4 Section Z type
Horizontal reach	23.2m
Depth reach	19.9m
Delivery line	125mm
End hose length	3m

KB-M27Z



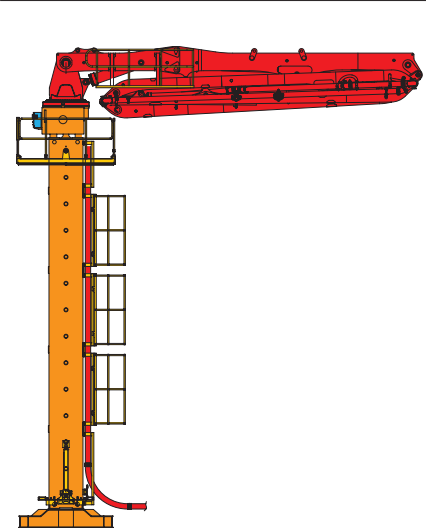
Boom type	5 Section R, Z type
Horizontal reach	26.3m
Depth reach	23.5m
Delivery line	125mm
End hose length	3m

KB-M28Z



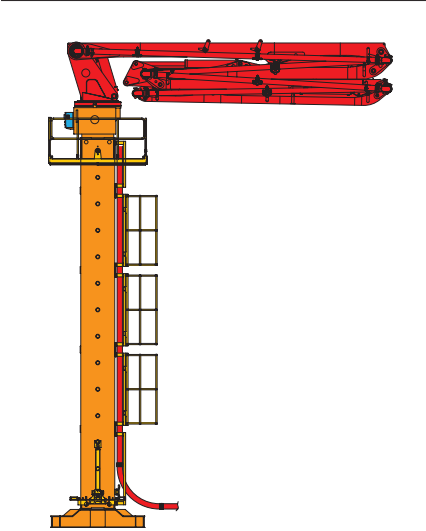
Boom type	4 Section Z type
Horizontal reach	27.64m
Depth reach	23.1m
Delivery line	125mm
End hose length	3m

KB-M32R



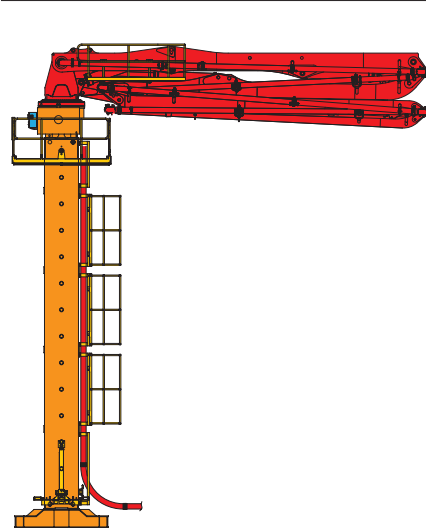
Boom type	4 Section R type
Horizontal reach	32.2m
Depth reach	27.5m
Delivery line	125mm
End hose length	3.5m

KB-M33Z



Boom type	5 Section R, Z type
Horizontal reach	32.1m
Depth reach	28.1m
Delivery line	125mm
End hose length	3.5m

KB-M34Z



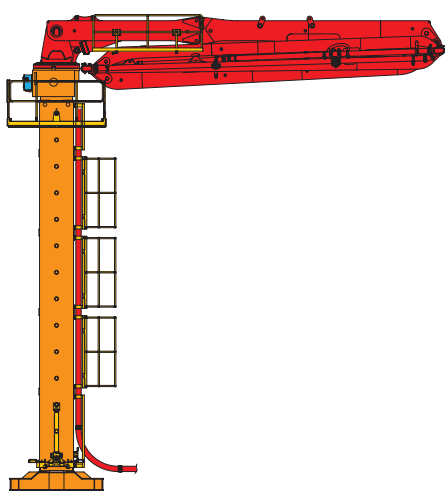
Boom type	4 Section Z type
Horizontal reach	33.1m
Depth reach	28.1m
Delivery line	125mm
End hose length	3.5m

► Photos and drawings are for illustrative purpose only. / ► Right to make technical amendments reserved. / ► Both Rexroth and Kawasaki pump cell available. / ► Dimension will vary with different truck makes, models and specifications. / ► Maximum theoretical values listed.

KCP PUMPS

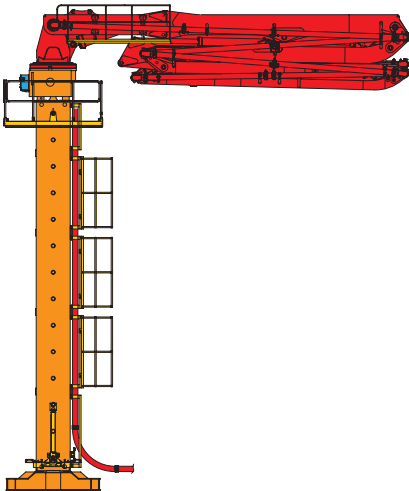
PLACING BOOMS

KB-M36R



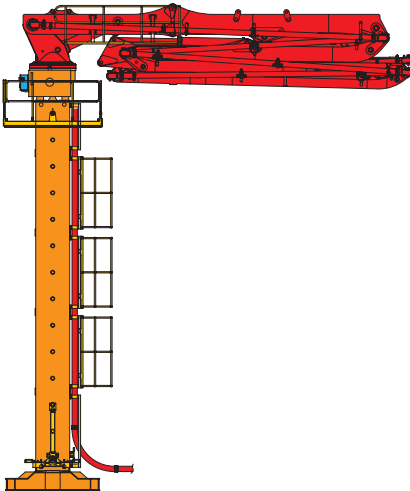
Boom type	4 Section R type
Horizontal reach	35.7m
Depth reach	30.3m
Delivery line	125mm
End hose length	3.5m

KB-M36RZ



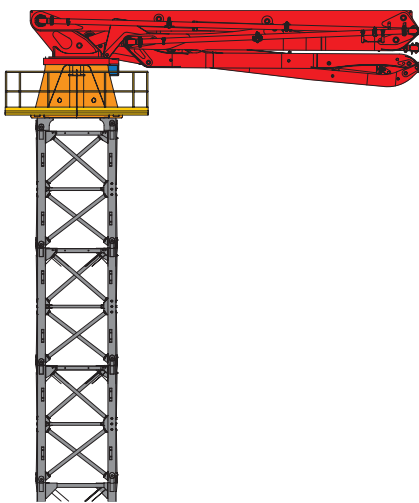
Boom type	5 Section R, Z type
Horizontal reach	35.57m
Depth reach	30.69m
Delivery line	125mm
End hose length	3.5m

KB-M38Z



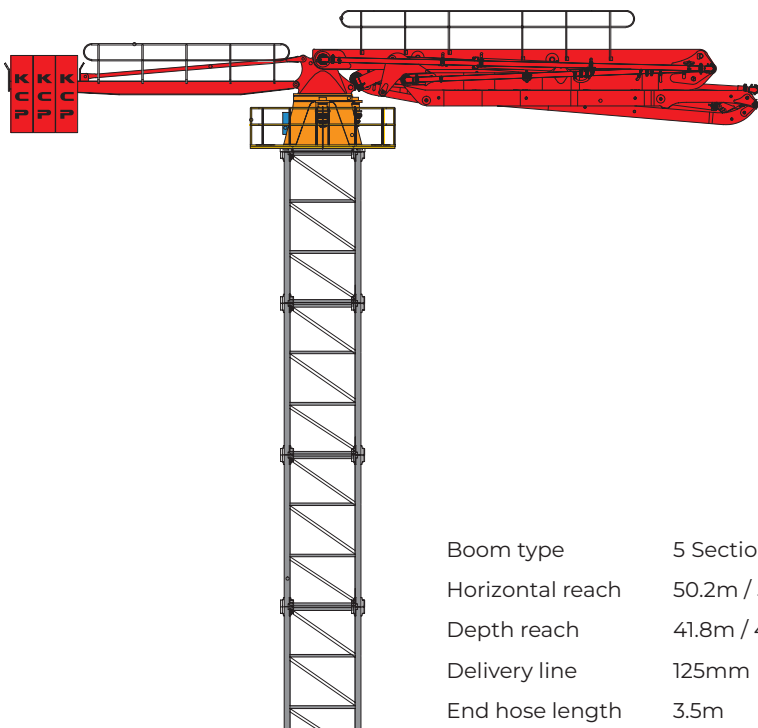
Boom type	5 Section R, Z type
Horizontal reach	36.9m
Depth reach	32.2m
Delivery line	125mm
End hose length	3.5m

KB-M42Z



Boom type	5 Section R, Z type
Horizontal reach	40.0m
Depth reach	35.4m
Delivery line	125mm
End hose length	3.5m

KB-M52RZ / KB-M56RZ

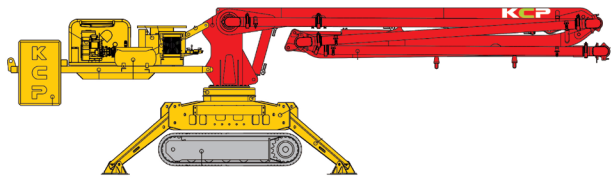
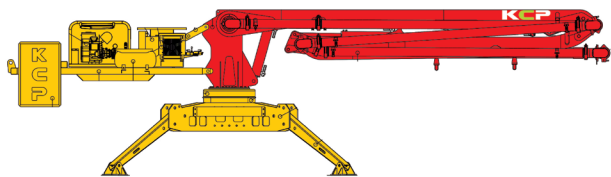


Boom type	5 Section R, Z type
Horizontal reach	50.2m / 53.85m
Depth reach	41.8m / 44.4m
Delivery line	125mm
End hose length	3.5m

KCP PUMPS

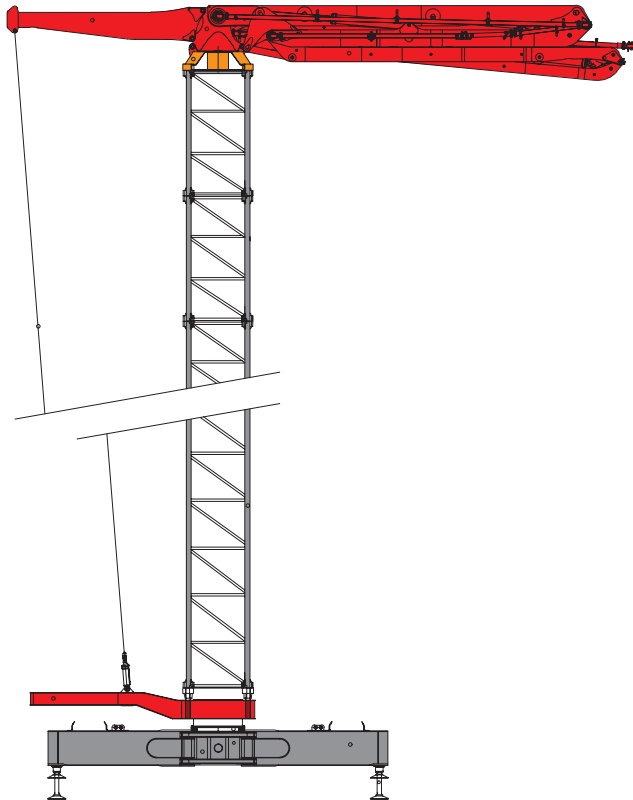
PLACING BOOMS

KS-M15Z



Boom type	3 Section Z type
Horizontal reach	14.8m
Depth reach	10m
Unfolding height	5.11m
Section articulation	92°/190°/265°
Delivery line	125mm
Proportional boom	Yes
End hose length	3.5m
Total weight	5,600kg / Crawler Type : 7,170kg

KB-M60RZ



Boom type	5 Section R, Z type
Horizontal reach	55.9m
Depth reach	45.7m
Delivery line	125mm
End hose length	3.5m

Case Study: Split-Placing Boom Installation

This case highlights the innovative use of a concrete pump truck's boom, detached and installed on a tower mast, to facilitate bridge pier construction. By employing this method, flexible and efficient concrete pouring is achieved, ensuring precision and adaptability for complex construction projects.

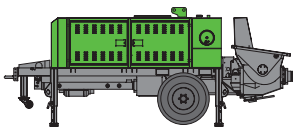


KCP PUMPS

STATIONARY PUMPS

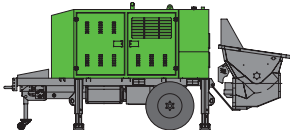
KTP 0705

Maximum Output	52m³/h
Concrete Pressure	70bar
Vertical distance	100m
Horizontal distance	175m
Weight	2,980kg



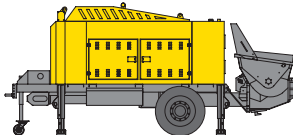
KTP 0706

Maximum Output	70m³/h
Concrete Pressure	70bar
Vertical distance	100m
Horizontal distance	175m
Weight	3,900kg (Track 4,900kg)



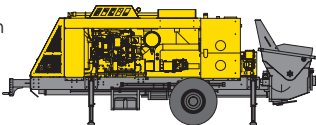
KTP 1310

	High	Low
Maximum Output	64m³/h	84m³/h
Concrete Pressure	126bar	95bar
Vertical distance	180m	135m
Horizontal distance	315m	235m
Weight	5,380kg	



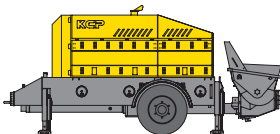
KTP 1714

	High	Low
Maximum Output	88m³/h	116m³/h
Concrete Pressure	172bar	130bar
Vertical distance	245m	185m
Horizontal distance	430m	325m
Weight	7,000kg (Track 7,850kg)	



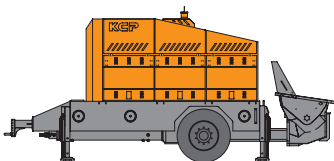
KTP 2210

Maximum Output	105m³/h
Concrete Pressure	224bar
Vertical distance	315m
Horizontal distance	550m
Weight	7,540kg (Track 8,700kg)



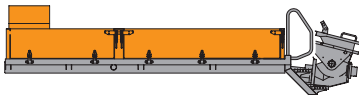
KTP 2812

Maximum Output	78m³/h
Concrete Pressure	285bar
Vertical distance	405m
Horizontal distance	710m
Weight	10,500kg



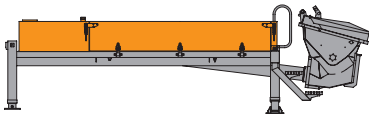
KML 0706

Maximum Output	63m³/h
Concrete Pressure	87bar
Vertical distance	125m
Horizontal distance	215m
Weight	3,360kg



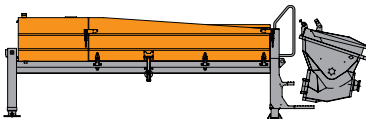
KML 1310

Maximum Output	64m³/h
Concrete Pressure	126bar
Vertical distance	180m
Horizontal distance	315m
Weight	5,280kg



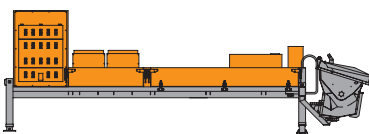
KML 1714

Maximum Output	95m³/h
Concrete Pressure	172bar
Vertical distance	245m
Horizontal distance	430m
Weight	5,380kg



KML 2812

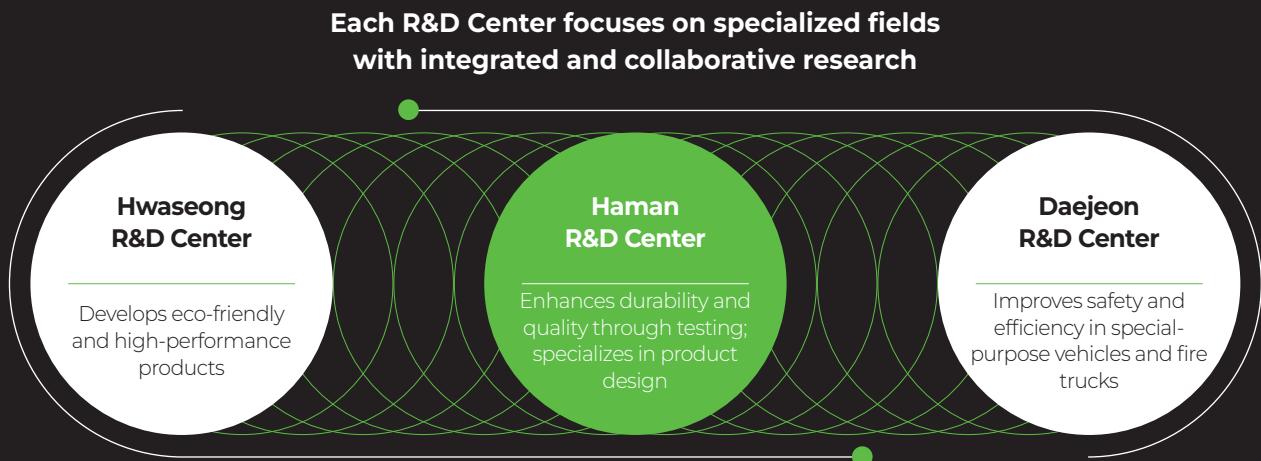
Maximum Output	112m³/h
Concrete Pressure	285bar
Vertical distance	405m
Horizontal distance	710m
Engine/HP	CAT-C7.1 / 300HP
Weight	6,700kg



Opening the Future
with Innovation

R&D Center

KCP's R&D Centers are dedicated to advancing technologies for industrial special vehicles and equipment. Since being certified as a corporate research institute in 2010, KCP has operated three R&D Centers in Haman, Hwaseong, and Daejeon. Each center focuses on forward-looking and eco-friendly technology development through integrated and collaborative research to boost global competitiveness. By leveraging innovative design solutions and advanced manufacturing processes, KCP's R&D Centers ensure top-quality products and drive continuous technological innovation.



Quality Innovation

KCP is enhancing product competitiveness and pursuing sustainable growth through quality innovation. Our adherence to international quality standards is demonstrated by our CE and ISO 9001 certifications, indicating that KCP's quality management system is of the highest standard and a key factor in delivering trust and satisfaction to our customers.



CE

CE Certification: This mark indicates that products sold in the European Economic Area (EEA) comply with EU directives related to safety, health, environmental, and consumer protection. CE certification ensures that KCP's products are safe and reliable, qualifying them for unrestricted distribution in the European market.



ISO 9001

ISO 9001 Certification: This certification from the International Organization for Standardization (ISO) pertains to Quality Management Systems (QMS). ISO 9001 includes processes for continuously improving the quality of products and services, aiming to increase customer satisfaction. This certification proves that KCP has established a systematic and consistent quality management framework.



► Photos and drawings are for illustrative purpose only. / ► Right to make technical amendments reserved. / ► Both Rexroth and Kawasaki pump cell available. / ► Dimension will vary with different truck makes, models and specifications. / ► Maximum theoretical values listed.

Proactive and Systematic Service

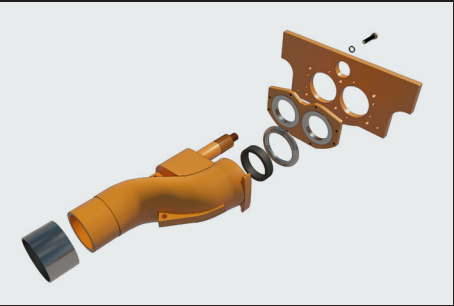
KCP is researching proactive and systematic service systems to provide customized services to customers worldwide. We offer technical consultation, maintenance training, operational expertise, and reliable genuine accessories and parts, striving to reduce maintenance costs through high-quality standardization and design improvements.

Services



KCP provides rapid maintenance services, professional consultation and technical support, and reliable supply of genuine accessories and parts to over 120 countries worldwide. KCP is always committed to keeping customers' equipment in optimal condition.

Genuine Parts



KCP's genuine parts ensure the quality of equipment and maximize performance and operational efficiency. We supply reliable parts to maintain consistent performance at all job sites.

Training Programs



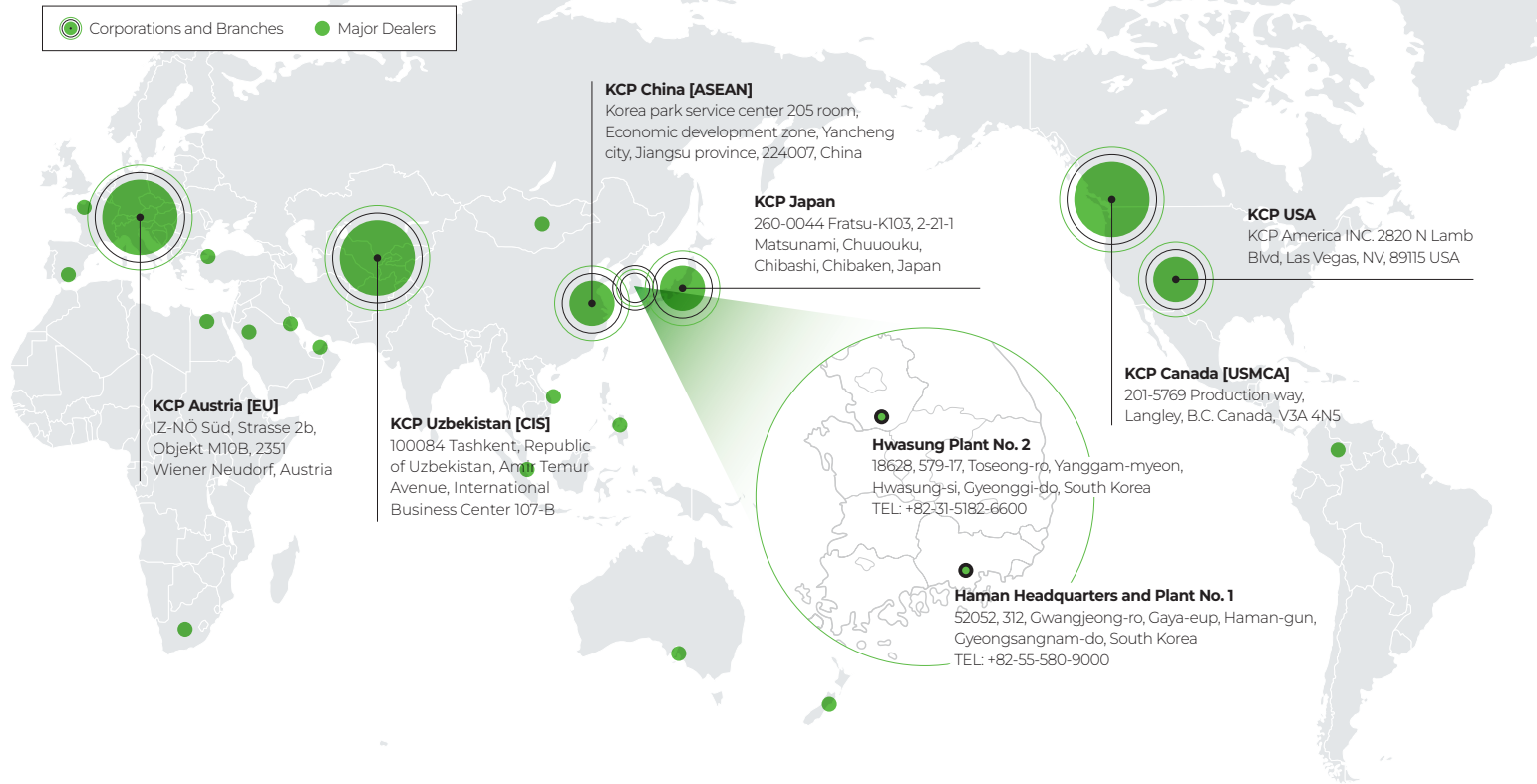
KCP's skilled engineers offer in-depth training on equipment functions and maintenance techniques, providing systematic education and training programs to cultivate professional technicians and skilled equipment operators.

KCP Members

KCP Members is a customer service program for KCP equipment owners and dealers. We are constantly striving to maintain superior performance and profitability at your industrial sites.



Global Presence



Expanding Globally with Local Expertise

With a network of over 50 dealers worldwide and local subsidiaries in Canada (USMCA), Austria (EU), and Uzbekistan (CIS), KCP is committed to delivering high-quality products and building a strong global presence.

We are enhancing our brand power by developing region-specific models and leveraging localized production facilities. To enter new markets, we are increasing direct exports and adopting market-focused sales strategies by partnering with top-tier dealers and cultivating new ones.

Our vision is to transition from domestically-focused production to global production bases, standardize manufacturing technologies and systems, and optimize production efficiency on a global scale.



KCP PUMPS PLACING BOOMS

Easy Assembly and Installation

- ▶ Pin-type MAST design allows for simple assembly and disassembly
- ▶ Minimizes interference during tower mast installation, enabling faster operations

Superior Performance and Stability

- ▶ High-strength design enhances durability and operational stability.
- ▶ Ensures smooth and precise concrete placement for consistent quality

Exceptional Flexibility

- ▶ Suitable for a variety of projects, including bridges and high-rise buildings
- ▶ Efficient performance even in confined spaces or challenging environments

Proven Global Track Record

- ▶ Successfully utilized in numerous international projects, showcasing reliability

Cost Efficiency

- ▶ Easy maintenance reduces overall operating costs



KCP GmbH EUROPEAN HEADQUARTERS OF KCP

IZ-NÖ Süd, Strasse 2b, Objekt M10B, 2351 Wiener Neudorf, Austria

Tel : +43(0)2236-660685 Fax : +43(0)2236-660685-89 info@kcpeu.com www.kcpeu.com / www.kcpcpump.com

Specifications in this catalog may be changed without notice to improve machine performance, and photos may have optional features applied, so they may differ from the actual vehicle purchased.

* The color of the photos included in this print may differ slightly from the color of the actual machine due to the production process such as printing.

* Failure to use the parts provided by our company may cause fatal damage to the machine.

Printed on February 10, 2025

Copyright © 2025 KCP Co., Ltd. ALL RIGHTS RESERVED.