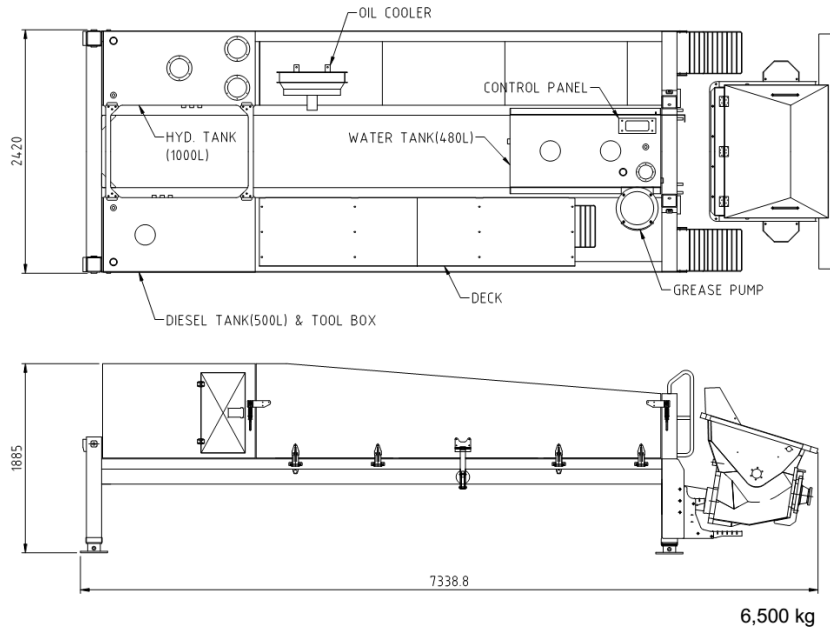


## KML2210



| <input type="checkbox"/> Pump specifications |                                 | <input type="checkbox"/> Performance diagram |  |
|--|---------------------------------|--|--|
| Engine RPM                                   | 1850 rpm                        |  |  |
| Maximum output                               | 80(High), 120(Low) m³/h         |  |  |
| Main cylinder                                | Ø160/ Ø90×1800ST                |  |  |
| Concrete cylinder                            | Ø200×1800ST                     |  |  |
| Cycling system                               | Hydraulic with manual overrides |  |  |
| Stroke per minute                            | 24(High), 35(Low)               |  |  |
| Concrete pressure                            | 230(High), 155(Low) bar         |  |  |
| Hopper capacity                              | 0.6 m³                          |  |  |
| S-tube                                       | Ø200×Ø180                       |  |  |
| Hydraulic pump                               | Rexroth 190DT                   |  |  |
| Max. aggregate size                          | 40 mm                           |  |  |
| Vertical distance                            | 320M(High), 220(Low) M          |  |  |
| Horizontal distance                          | 560(High), 385(Low) M           |  |  |
| Outrigger                                    | Hydraulic vertical ext.         |  |  |

- © Maximum theoretical values listed.
- © Photos and drawings are for illustrative purpose only
- © Dimension will vary with different truck makers, models and specifications
- © Right to make technical amendments reserved