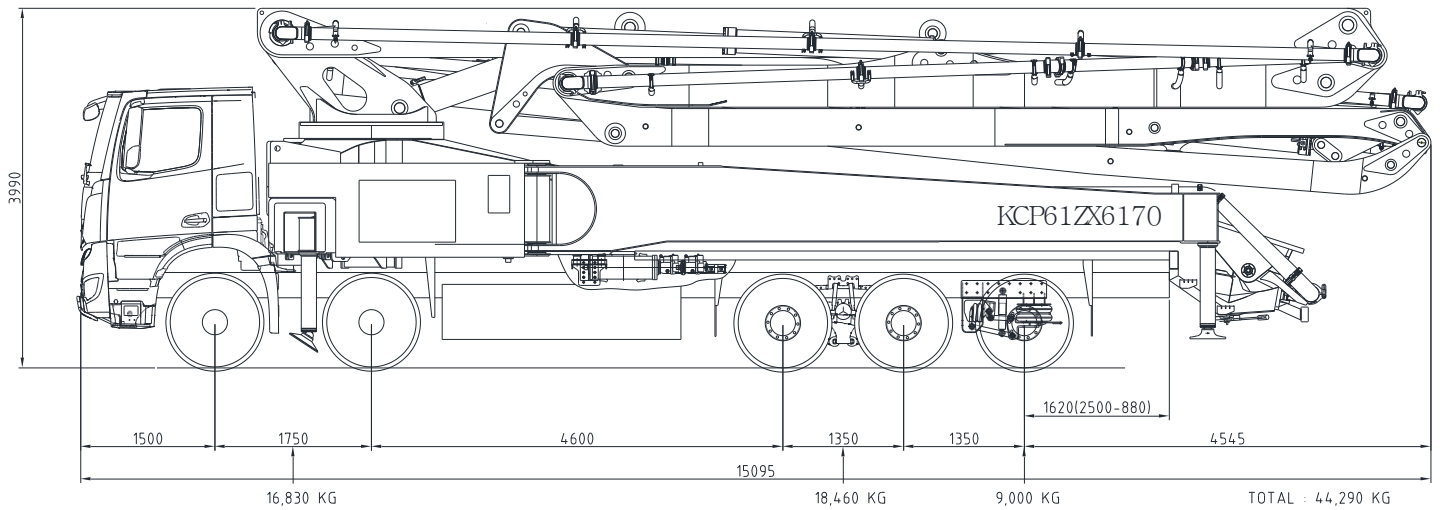


## KCP61ZX170

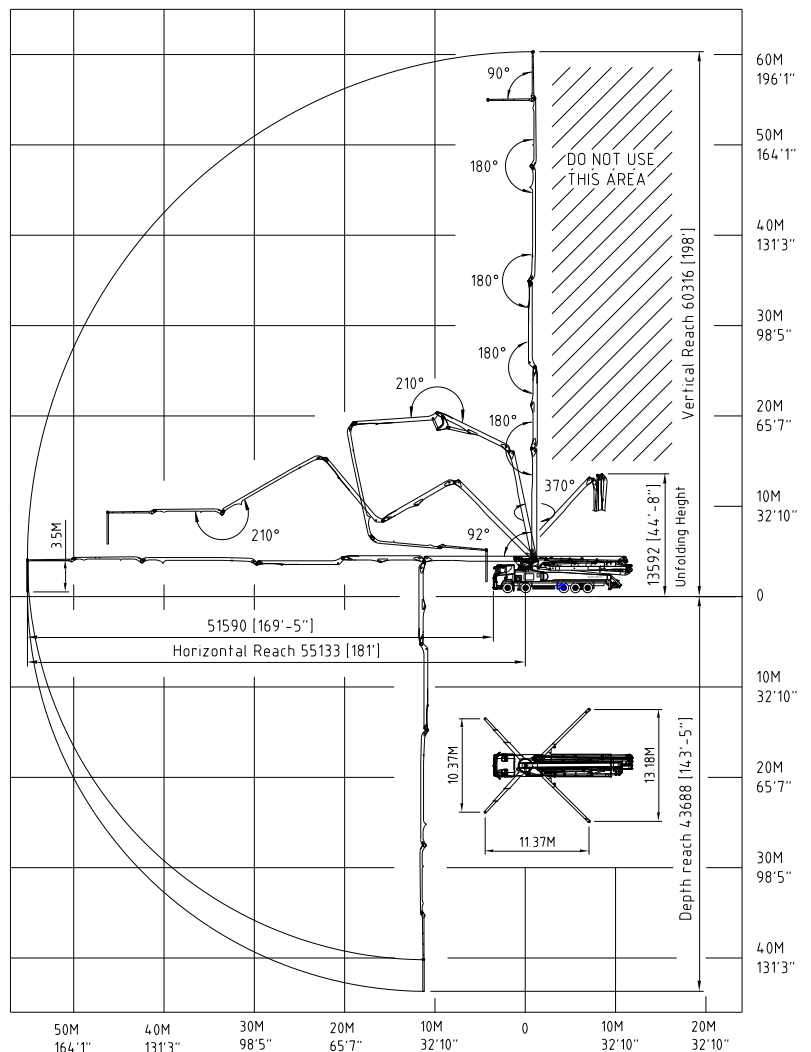


### ▣ Boom specifications

|                           |                             |
|---------------------------|-----------------------------|
| Vertical reach            | 60.3M                       |
| Horizontal reach          | 55M                         |
| Reach from front of truck | 51.5M                       |
| Unfolding height          | 13.6M                       |
| Section articulation      | 92°/180°/210°/180°/210°/90° |
| Rotation                  | 370°                        |
| Delivery line             | 125 mm                      |
| Proportional boom         | Yes                         |
| End hose length           | 3.5M                        |
| Outrigger spread-front    | 10.4 M                      |
| Outrigger spread-rear     | 13.2 M                      |
| Max. outrigger weight     | 42,500kg                    |

- ⊙ Truck specifications : Mercedes Benz 5051 (510PS, EURO6)
- ⊙ Maximum theoretical values listed.
- ⊙ Photos and drawings are for illustrative purpose only
- ⊙ Right to make technical amendments reserved

### ▣ Working diagram



### ▣ Pump specifications

|                     |                                 |
|---------------------|---------------------------------|
| Maximum output      | 170 m³/h                        |
| Concrete cylinder   | Ø230×2100                       |
| Stroke per minute   | 33                              |
| Concrete pressure   | 87 bar                          |
| Hopper capacity     | 0.6 m³                          |
| S-tube              | Ø200×Ø180                       |
| Hydraulic pump      | Rexroth A20VLO190               |
| Cycling system      | Hydraulic with manual overrides |
| Max. aggregate size | 40 mm                           |