

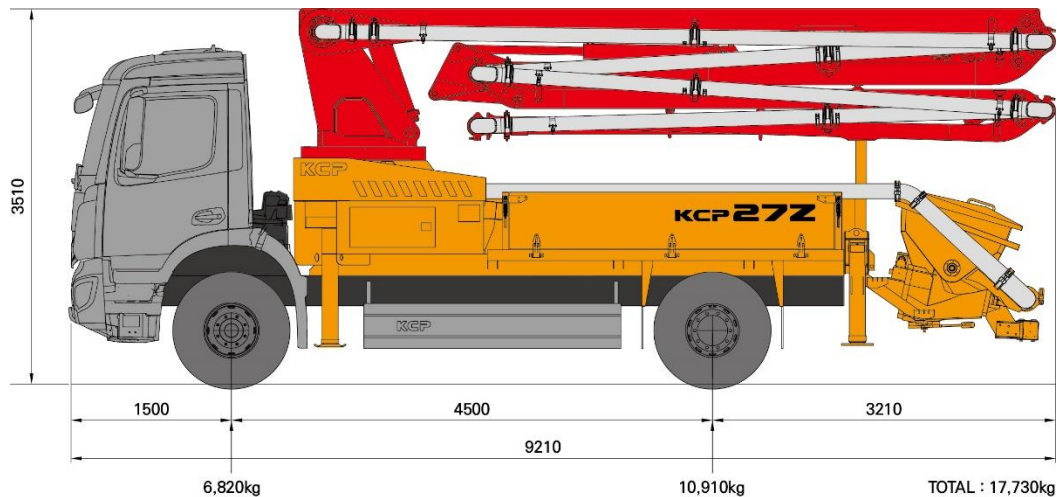
KCP27ZX120

BOOM
4 Section
Z Type

Max.
output
120 m³/h

Truck
326 PS
4x2

Truck specifications: Mercedes Benz AROCS1833 4X2 (326PS, Euro6 with GSR)



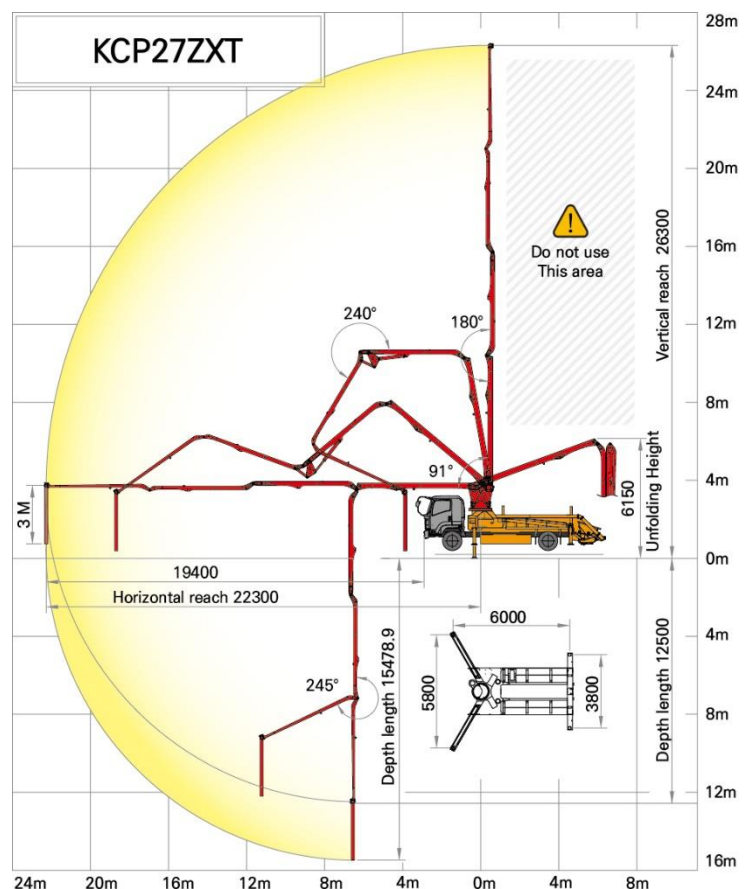
Boom specifications

Vertical reach	26,3 m
Horizontal reach	22,3 m
Reach from front of truck	19,4 m
Unfolding height	6,15 m
Section articulation	91°/180°/240°/245°
Rotation	370°
Delivery line	Ø 125
Proportional boom	Yes
End hose length	3,0 m
Outrigger spread-front	5,8 m X type
Outrigger spread-rear	3,8 m T type

Pump specifications

Maximum output	120 m ³ /h
Concrete cylinder	Ø230×1400
Stroke per minute	34
Concrete pressure	80 bar
Hopper capacity	0,6 m ³
S-tube	Ø200×Ø180
Hydraulic pump	Rexroth - A11VLO190
Cycling system	Hydraulic with manual overrides
Max. aggregate size	40 mm

Working diagram



- This represents the theoretical figure.
- The photos and drawings are for reference only.
- Dimensions may change depending on truck specifications and improvements.