



KCP CONCRETE PUMPS

Boom Pumps × Trailer & Line Pumps × Placing Booms
2025 Complete Lineup



WORLD CLASS 300



ISO 9001, ISO 14001

KCP

WE ARE CREATING A BETTER KCP
THROUGH INNOVATION AND CHALLENGES

BUILDING THE FUTURE TOGETHER WITH KCP

Wherever we go, we reshape the cityscape
With KCP, you can build higher and go further

KCP Concrete Pumps: Designed with You in Mind

KCP pumps are engineered to be the most user-friendly on the market.

The advanced Open-Loop Circuit System minimizes heat generation in hydraulic oil, making maintenance easier and extending the system's service life.

KCP Boom Pumps feature an optimized boom design with fewer curves, reducing resistance during pumping for greater efficiency and performance.

At KCP, simplicity drives everything we do.

Our mission is to provide the most streamlined hydraulic and electrical systems on the market. By removing unnecessary computerized controls, we've made troubleshooting straightforward and stress-free. Simply put, we've taken the 'trouble' out of troubleshooting.

Rexroth
Bosch Group



Main Pump

STRENX
PERFORMANCE STEEL

Steel

HAWE
HYDRAULIK

Control Valve



**KCP CONCRETE
PUMPS**

BOOM PUMPS



KCP20RZ90

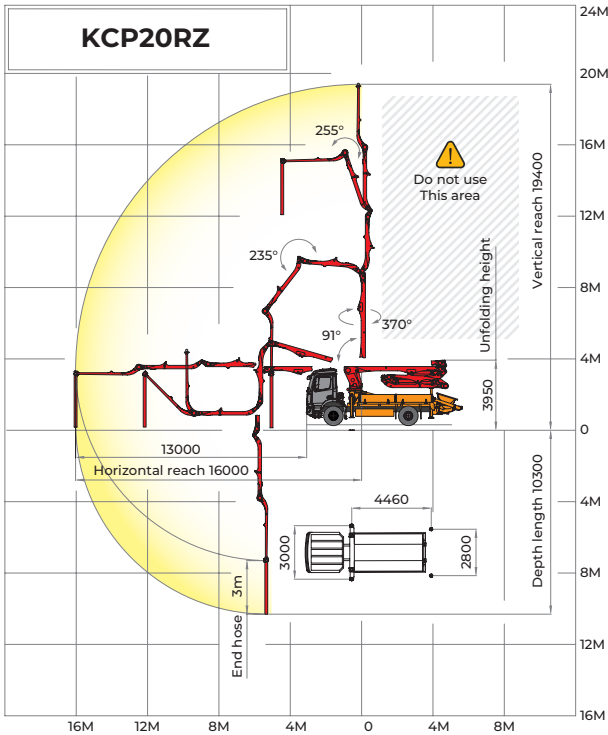
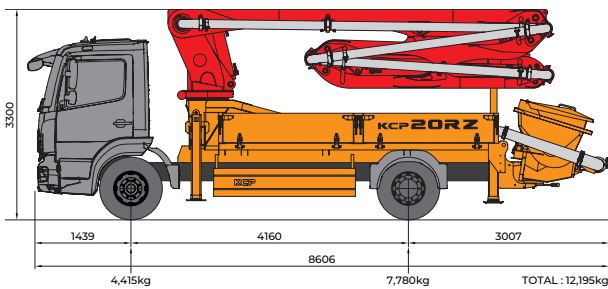


Boom specifications	
Vertical reach	19.4m
Horizontal reach	16m
Reach from front of truck	13m
Unfolding height	3.95m
Section articulation	91°/180°/230°/250°
Rotation	370°
Delivery line	125mm
Proportional boom	Yes
End hose length	3m
Outrigger spread-front	3m T type
Outrigger spread-rear	2.8m A type
Total weight	< 13ton
Chassis	MB ATEGO 1624 4×2 (EURO6 with GSR)

Pump specifications	
Maximum output	90m³/h
Concrete cylinder	Ø230×1,100mm
Stroke per minute	34
Concrete pressure	Max. 80bar
Hopper capacity	0.6m³
S-tube	Ø200×Ø180
Hydraulic pump	Rexroth-A11VLO190
Cycling system	Hydraulic with manual overrides
Max. aggregate size	40mm

► Photos and drawings are for illustrative purpose only. / ► Right to make technical amendments reserved. / ► Both Rexroth and Kawasaki pump cell available. / ► Dimension will vary with different truck makes, models and specifications. / ► Maximum theoretical values listed.

Working diagram



KCP24RZ120

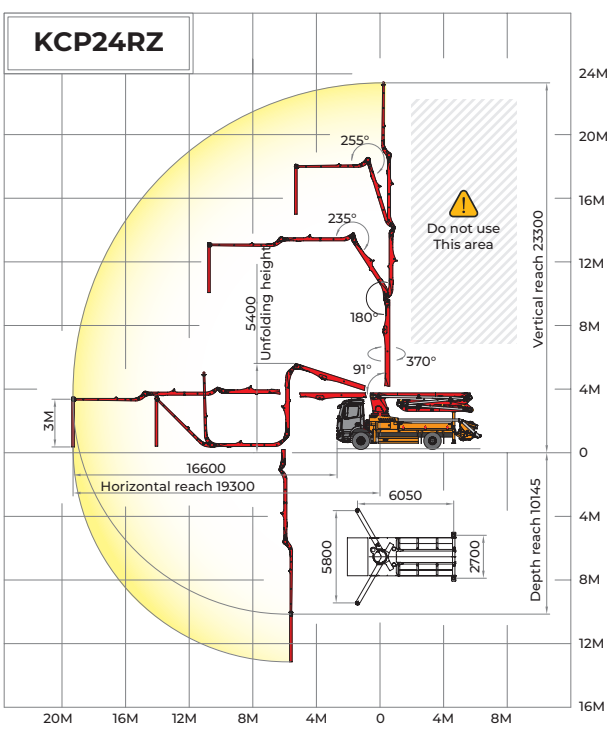
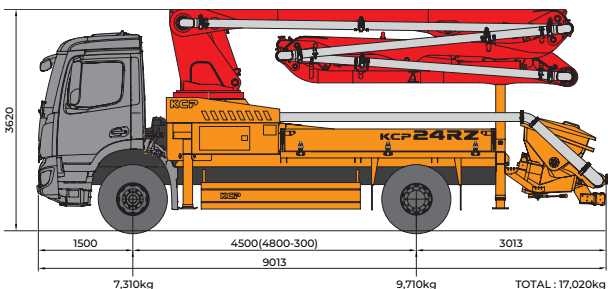


Boom specifications	
Vertical reach	23.3m
Horizontal reach	19.3m
Reach from front of truck	16.6m
Unfolding height	5.4m
Section articulation	94°/180°/260°/250°
Rotation	370°
Delivery line	125mm
Proportional boom	Yes
End hose length	3m
Outrigger spread-front	5.8m X type
Outrigger spread-rear	2.7m A type
Total weight	< 18ton
Chassis	MB AROCS 1833 4×2 (EURO6 with GSR)

Pump specifications	
Maximum output	120m³/h
Concrete cylinder	Ø230×1,400mm
Stroke per minute	35
Concrete pressure	Max. 80bar
Hopper capacity	0.6m³
S-tube	Ø200×Ø180
Hydraulic pump	Rexroth-A11VLO190
Cycling system	Hydraulic with manual overrides
Max. aggregate size	40mm

► Photos and drawings are for illustrative purpose only. / ► Right to make technical amendments reserved. / ► Both Rexroth and Kawasaki pump cell available. / ► Dimension will vary with different truck makes, models and specifications. / ► Maximum theoretical values listed.

Working diagram



KCP27ZX120

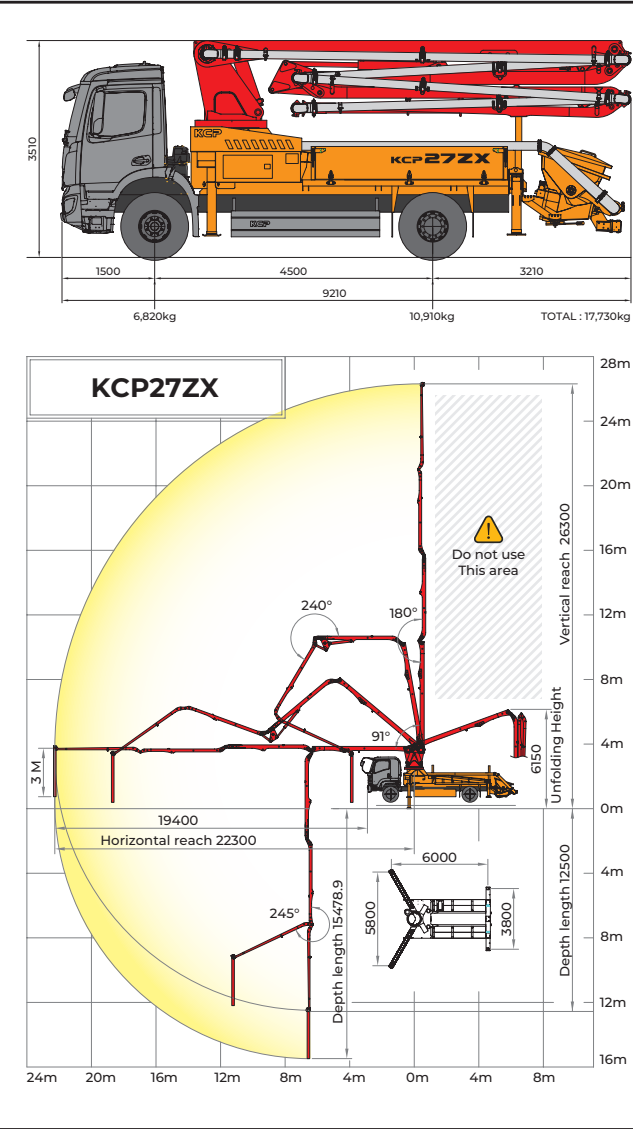


Boom specifications	
Vertical reach	26.3m
Horizontal reach	22.3m
Reach from front of truck	19.4m
Unfolding height	6.15m
Section articulation	91°/180°/240°/245°
Rotation	370°
Delivery line	125mm
Proportional boom	Yes
End hose length	3m
Outrigger spread-front	5.8m X type
Outrigger spread-rear	3.8m T type
Total weight	< 18ton
Chassis	MB AROCS 1833 4×2 (EURO6 with GSR)

Pump specifications	
Maximum output	120m³/h
Concrete cylinder	Ø230×1,400mm
Stroke per minute	34
Concrete pressure	Max. 80bar
Hopper capacity	0.6m³
S-tube	Ø200×Ø180
Hydraulic pump	Rexroth-A11VLO190
Cycling system	Hydraulic with manual overrides
Max. aggregate size	40mm

► Photos and drawings are for illustrative purpose only. / ► Right to make technical amendments reserved. / ► Both Rexroth and Kawasaki pump cell available. / ► Dimension will vary with different truck makes, models and specifications. / ► Maximum theoretical values listed.

Working diagram



KCP31ZX150

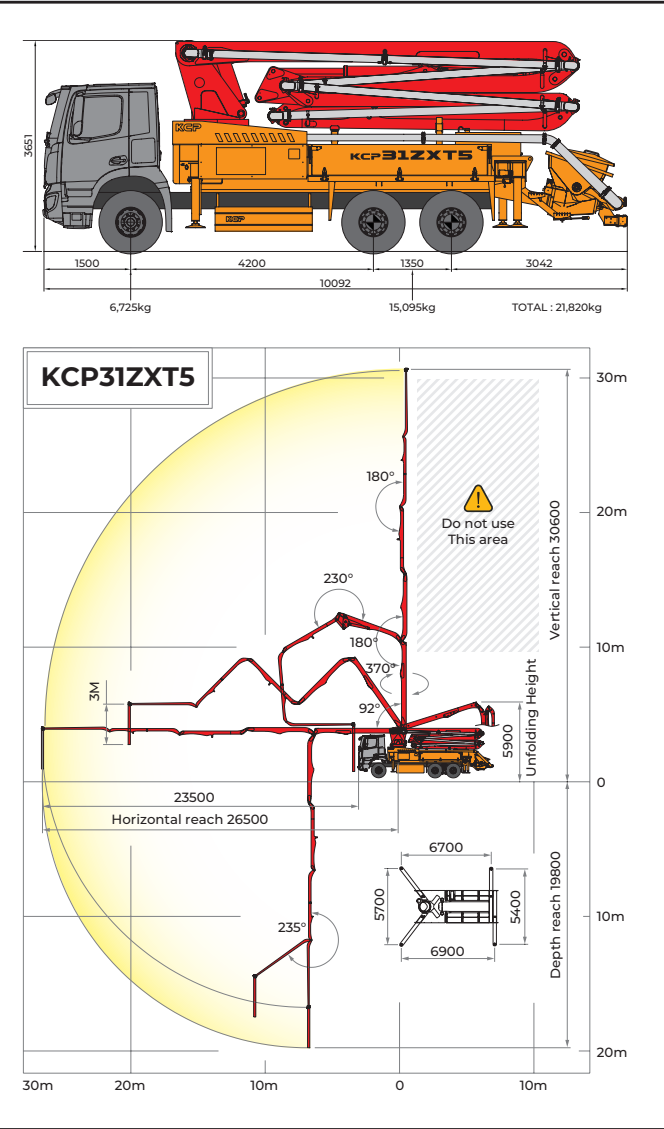


Boom specifications	
Vertical reach	30.6m
Horizontal reach	26.5m
Reach from front of truck	23.5m
Unfolding height	5.9m
Section articulation	92°/180°/230°/180°/235°
Rotation	370°
Delivery line	125mm
Proportional boom	Yes
End hose length	3m
Outrigger spread-front	5.7m X type
Outrigger spread-rear	5.4m T type
Total weight	< 22ton
Chassis	MB AROCS 2640 6×4 (EURO6 with GSR)

Pump specifications	
Maximum output	150m³/h
Concrete cylinder	Ø230×1,800mm
Stroke per minute	34
Concrete pressure	Max. 80bar
Hopper capacity	0.6m³
S-tube	Ø200×Ø180
Hydraulic pump	Rexroth-A11VLO260
Cycling system	Hydraulic with manual overrides
Max. aggregate size	40mm

► Photos and drawings are for illustrative purpose only. / ► Right to make technical amendments reserved. / ► Both Rexroth and Kawasaki pump cell available. / ► Dimension will vary with different truck makes, models and specifications. / ► Maximum theoretical values listed.

Working diagram



KCP37ZX5150



Boom specifications

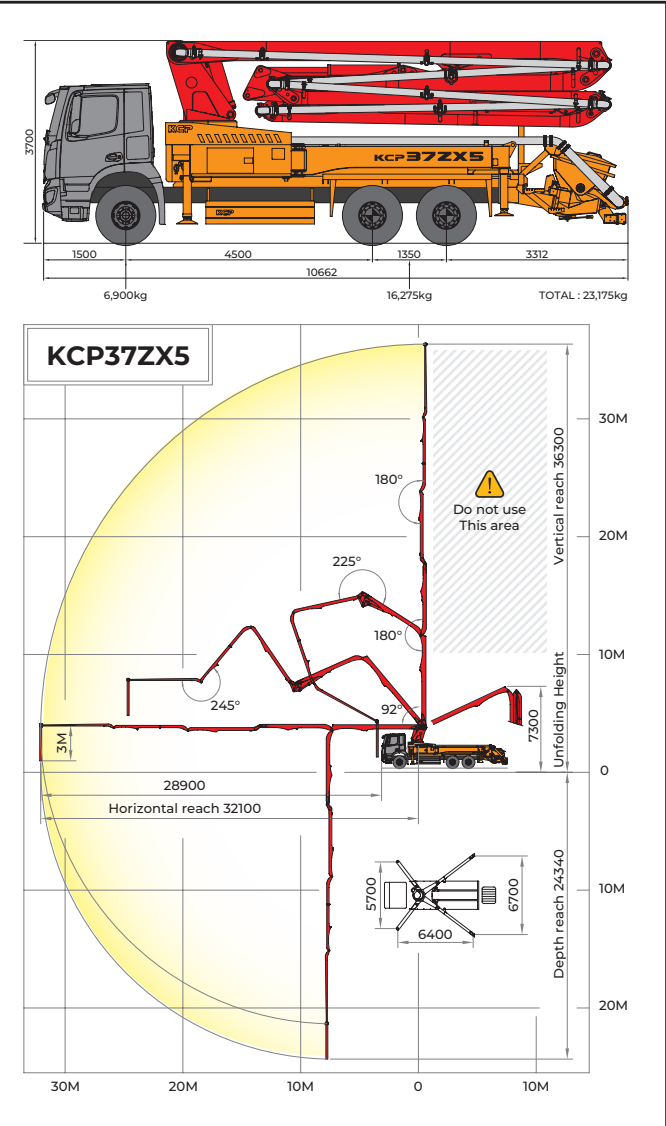
Vertical reach	36.3m	
Horizontal reach	32.1m	
Reach from front of truck	28.9m	
Unfolding height	7.3m	
Section articulation	92°/180°/225°/180°/245°	
Rotation	370°	
Delivery line	125mm	
Proportional boom	Yes	
End hose length	3m	
Outrigger spread-front	5.7m	X type
Outrigger spread-rear	6.7m	Swing type
Total weight	< 24ton	
Chassis	MB AROCS 2640 6×4 (EURO6 with GSR)	

Pump specifications

Maximum output	150m³/h
Concrete cylinder	Ø230×1,800mm
Stroke per minute	34
Concrete pressure	Max. 80bar
Hopper capacity	0.6m³
S-tube	Ø200×Ø180
Hydraulic pump	Rexroth-A11VLO260
Cycling system	Hydraulic with manual overrides
Max. aggregate size	40mm

► Photos and drawings are for illustrative purpose only. / ► Right to make technical amendments reserved. / ► Both Rexroth and Kawasaki pump cell available. / ► Dimension will vary with different truck makes, models and specifications. / ► Maximum theoretical values listed.

Working diagram



KCP43ZX5170



Boom specifications

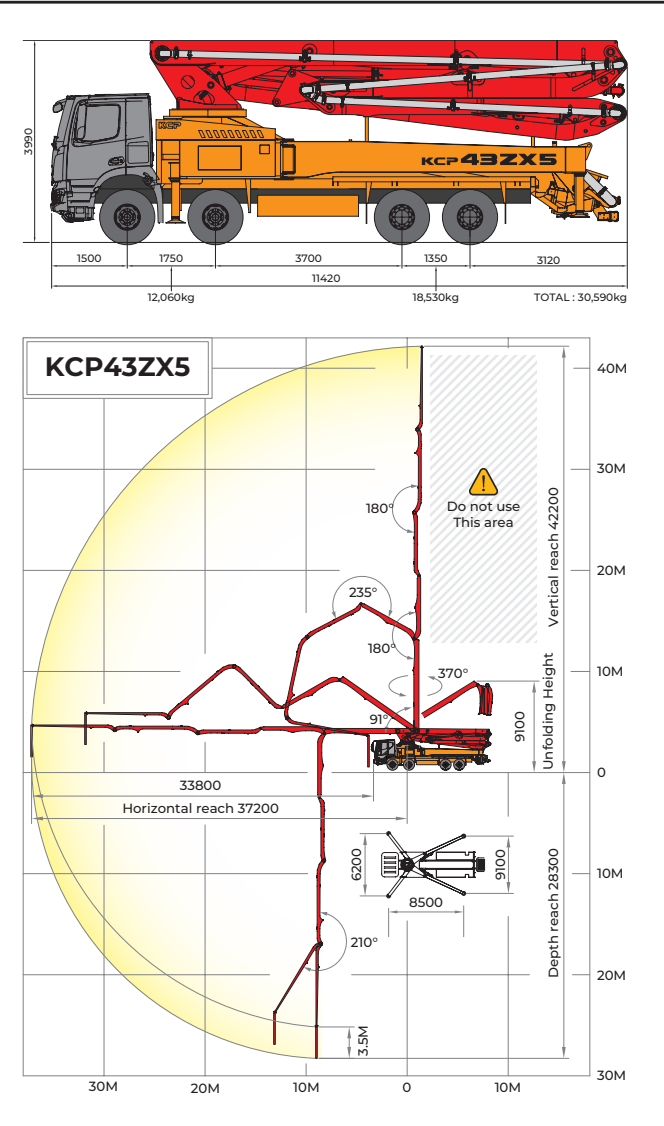
Vertical reach	42.2m	
Horizontal reach	37.2m	
Reach from front of truck	33.8m	
Unfolding height	9.1m	
Section articulation	91°/180°/235°/180°/210°	
Rotation	370°	
Delivery line	125mm	
Proportional boom	Yes	
End hose length	3.5m	
Outrigger spread-front	6.2m	X type
Outrigger spread-rear	9.1m	Swing type
Total weight	< 31ton	
Chassis	MB AROCS 3243 8×4 (EURO6 with GSR)	

Pump specifications

Maximum output	170m³/h
Concrete cylinder	Ø230×2,100mm
Stroke per minute	33
Concrete pressure	Max. 85bar
Hopper capacity	0.6m³
S-tube	Ø200×Ø180
Hydraulic pump	Rexroth-A20VLO190
Cycling system	Hydraulic with manual overrides
Max. aggregate size	40mm

► Photos and drawings are for illustrative purpose only. / ► Right to make technical amendments reserved. / ► Both Rexroth and Kawasaki pump cell available. / ► Dimension will vary with different truck makes, models and specifications. / ► Maximum theoretical values listed.

Working diagram



KCP 46ZX5170

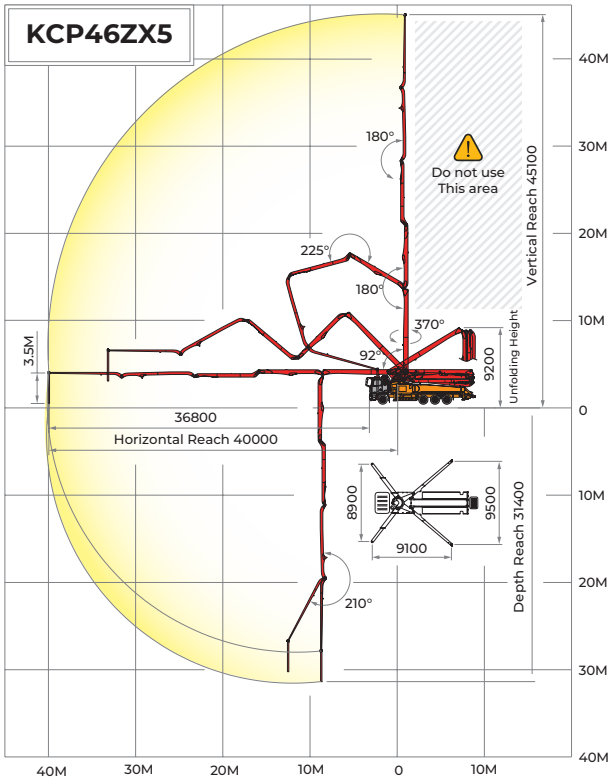
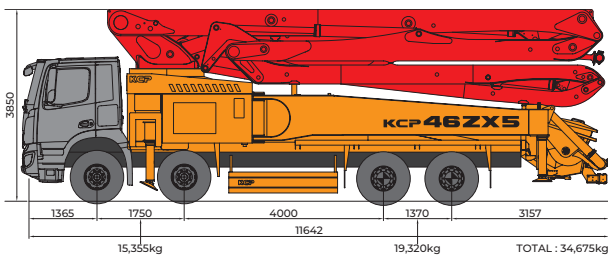


Boom specifications	
Vertical reach	45.1m
Horizontal reach	40m
Reach from front of truck	36.8m
Unfolding height	9.2m
Section articulation	92°/180°/225°/180°/210°
Rotation	370°
Delivery line	125mm
Proportional boom	Yes
End hose length	3.5m
Outrigger spread-front	8.9m X type
Outrigger spread-rear	9.5m Swing type
Total weight	< 35ton
Chassis	MB AROCS 4146 8×4 (EURO6 with GSR)

Pump specifications	
Maximum output	170m³/h
Concrete cylinder	Ø230×2,100mm
Stroke per minute	33
Concrete pressure	Max. 85bar
Hopper capacity	0.6m³
S-tube	Ø200×Ø180
Hydraulic pump	Rexroth-A20VLO190
Cycling system	Hydraulic with manual overrides
Max. aggregate size	40mm

► Photos and drawings are for illustrative purpose only. / ► Right to make technical amendments reserved. / ► Both Rexroth and Kawasaki pump cell available. / ► Dimension will vary with different truck makes, models and specifications. / ► Maximum theoretical values listed.

Working diagram



KCP 48ZX5170

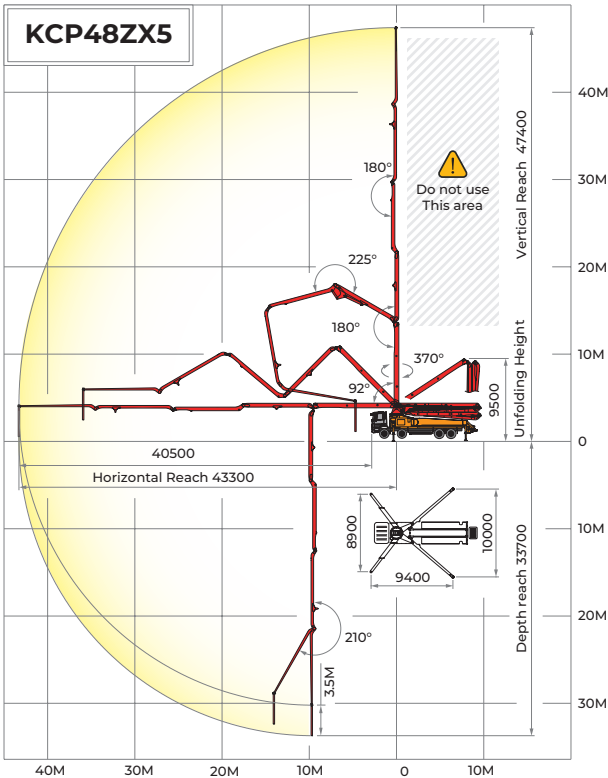
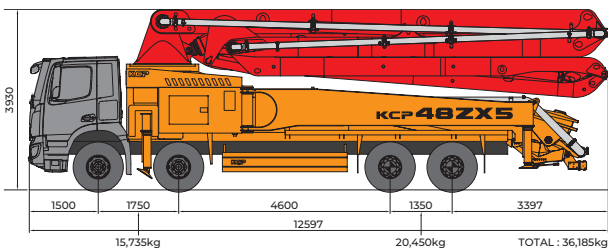


Boom specifications	
Vertical reach	47.4m
Horizontal reach	43.3m
Reach from front of truck	40.5m
Unfolding height	9.5m
Section articulation	92°/180°/225°/180°/210°
Rotation	370°
Delivery line	125mm
Proportional boom	Yes
End hose length	3.5m
Outrigger spread-front	8.9m X type
Outrigger spread-rear	10m Swing type
Total weight	< 37ton
Chassis	MB AROCS 4148 8×4 (EURO6 with GSR)

Pump specifications	
Maximum output	170m³/h
Concrete cylinder	Ø230×2,100mm
Stroke per minute	33
Concrete pressure	Max. 85bar
Hopper capacity	0.6m³
S-tube	Ø200×Ø180
Hydraulic pump	Rexroth-A20VLO190
Cycling system	Hydraulic with manual overrides
Max. aggregate size	40mm

► Photos and drawings are for illustrative purpose only. / ► Right to make technical amendments reserved. / ► Both Rexroth and Kawasaki pump cell available. / ► Dimension will vary with different truck makes, models and specifications. / ► Maximum theoretical values listed.

Working diagram



KCP52ZX6170

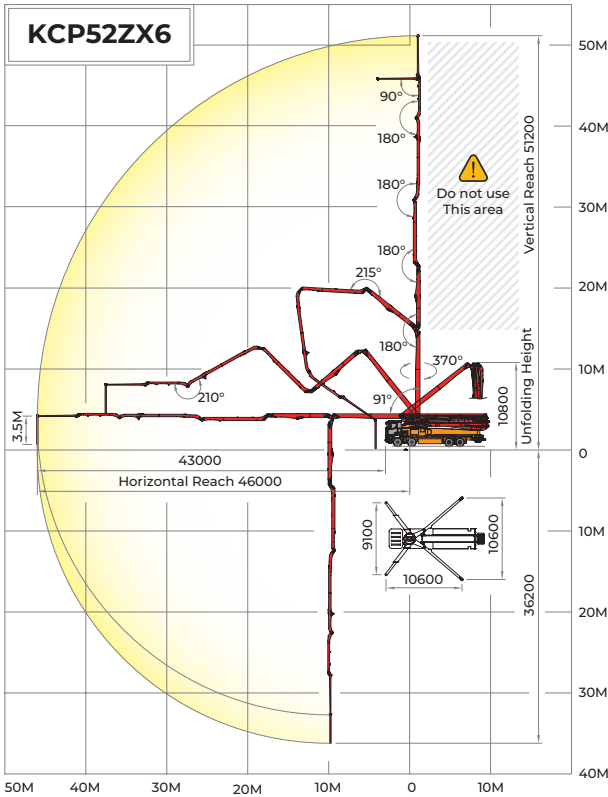
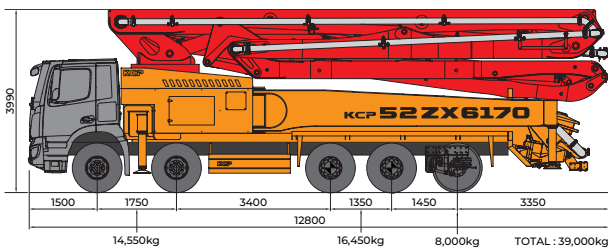


Boom specifications	
Vertical reach	51.2m
Horizontal reach	46m
Reach from front of truck	43m
Unfolding height	10.8m
Section articulation	91°/180°/215°/180°/210°/90°
Rotation	370°
Delivery line	125mm
Proportional boom	Yes
End hose length	3.5m
Outrigger spread-front	9.1mX type
Outrigger spread-rear	10.6mSwing type
Total weight	< 40ton
Chassis	MB AROCS 5046 10×4 (EURO6 with GSR)

Pump specifications	
Maximum output	170m³/h
Concrete cylinder	Ø230×2,100mm
Stroke per minute	33
Concrete pressure	Max. 85bar
Hopper capacity	0.6m³
S-tube	Ø200×Ø180
Hydraulic pump	Rexroth-A20VLO190
Cycling system	Hydraulic with manual overrides
Max. aggregate size	40mm

► Photos and drawings are for illustrative purpose only. / ► Right to make technical amendments reserved. / ► Both Rexroth and Kawasaki pump cell available. / ► Dimension will vary with different truck makes, models and specifications. / ► Maximum theoretical values listed.

Working diagram



KCP56ZX6170

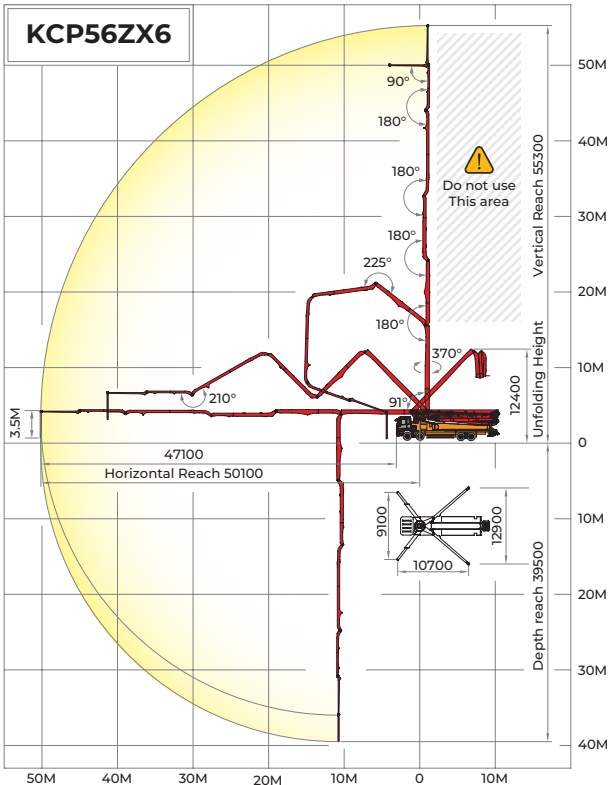
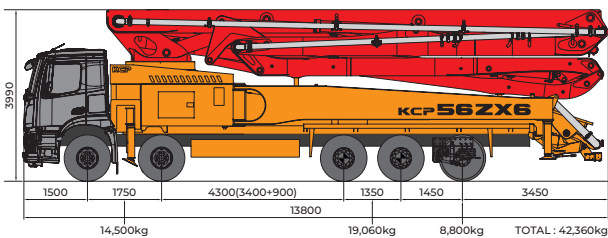


Boom specifications	
Vertical reach	55.3m
Horizontal reach	50.1m
Reach from front of truck	47.1m
Unfolding height	12.4m
Section articulation	91°/180°/225°/180°/210°/90°
Rotation	370°
Delivery line	125mm
Proportional boom	Yes
End hose length	3.5m
Outrigger spread-front	9.1mX type
Outrigger spread-rear	12.9mSwing type
Total weight	< 43ton
Chassis	MB AROCS 5046 10×4 (EURO6 with GSR)

Pump specifications	
Maximum output	170m³/h
Concrete cylinder	Ø230×2,100mm
Stroke per minute	33
Concrete pressure	Max. 85bar
Hopper capacity	0.6m³
S-tube	Ø200×Ø180
Hydraulic pump	Rexroth-A20VLO190
Cycling system	Hydraulic with manual overrides
Max. aggregate size	40mm

► Photos and drawings are for illustrative purpose only. / ► Right to make technical amendments reserved. / ► Both Rexroth and Kawasaki pump cell available. / ► Dimension will vary with different truck makes, models and specifications. / ► Maximum theoretical values listed.

Working diagram



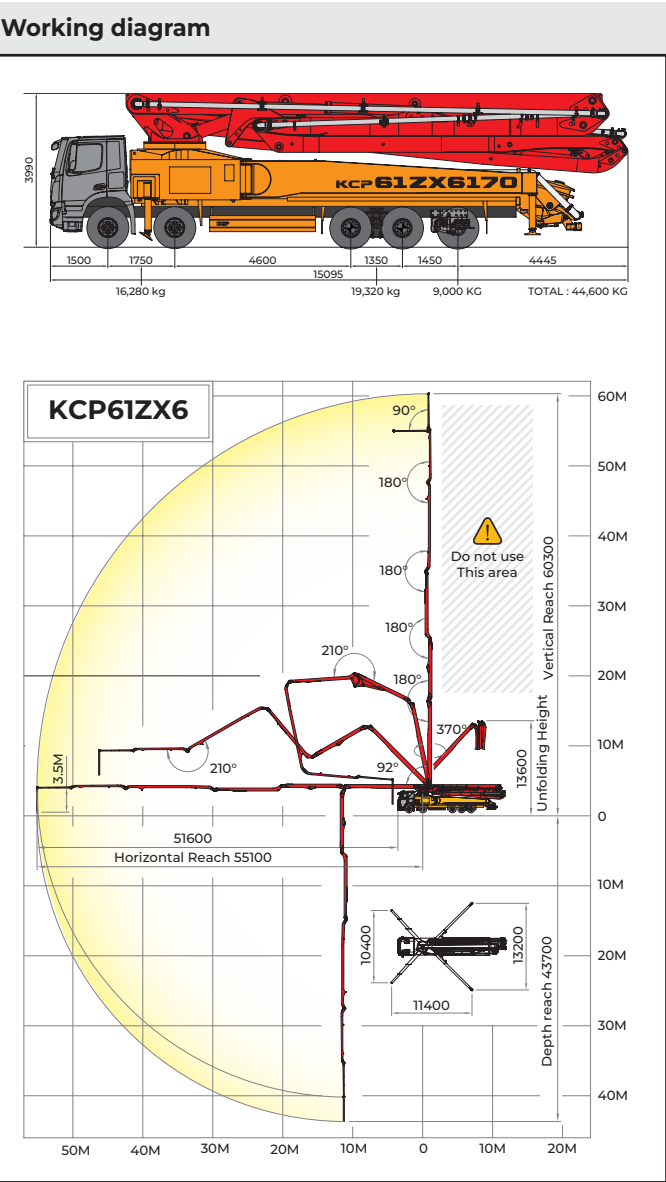
KCP 61ZX6170



Boom specifications	
Vertical reach	60.3m
Horizontal reach	55.1m
Reach from front of truck	51.6m
Unfolding height	13.6m
Section articulation	92°/180°/210°/180°/210°/90°
Rotation	370°
Delivery line	125mm
Proportional boom	Yes
End hose length	3.5m
Outrigger spread-front	10.4m X type
Outrigger spread-rear	13.2m Swing type
Total weight	< 45ton
Chassis	MB AROCS 50S1 10×4 (EURO6 with GSR)

Pump specifications	
Maximum output	170m³/h
Concrete cylinder	Ø230×2,100mm
Stroke per minute	33
Concrete pressure	Max. 85bar
Hopper capacity	0.6m³
S-tube	Ø200×Ø180
Hydraulic pump	Rexroth-A20VLO190
Cycling system	Hydraulic with manual overrides
Max. aggregate size	40mm

► Photos and drawings are for illustrative purpose only. / ► Right to make technical amendments reserved. / ► Both Rexroth and Kawasaki pump cell available. / ► Dimension will vary with different truck makes, models and specifications. / ► Maximum theoretical values listed.



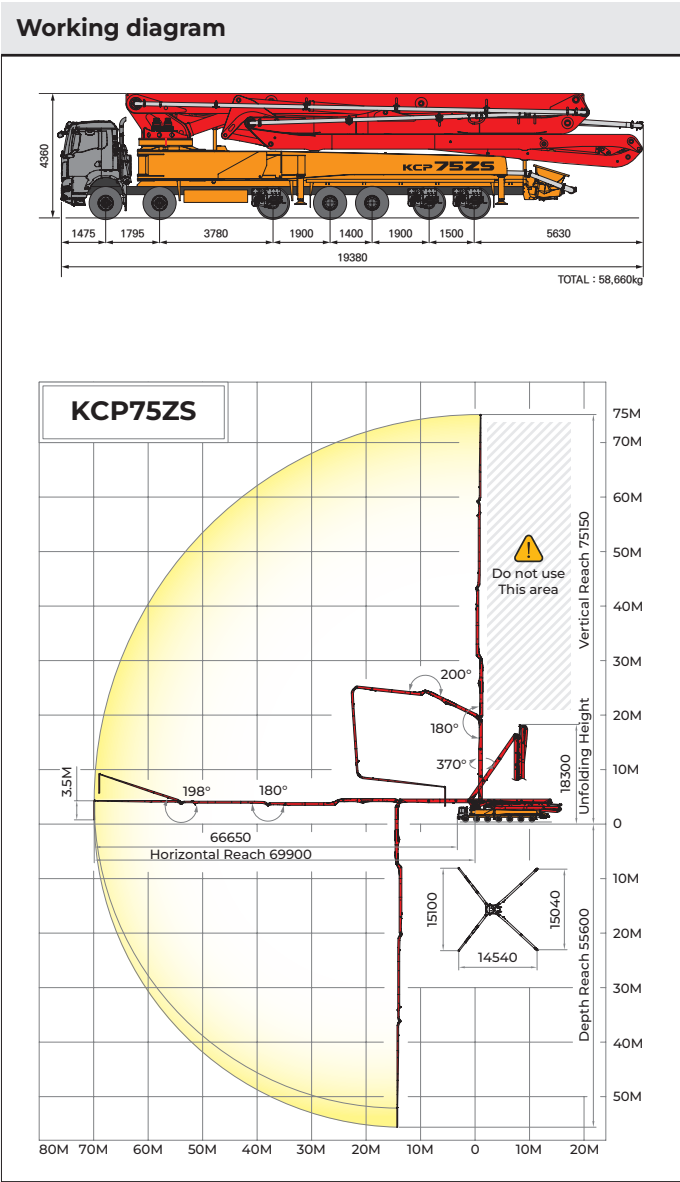
KCP 75ZS



Boom specifications	
Vertical reach	75.1m
Horizontal reach	69.9m
Reach from front of truck	66.6m
Unfolding height	18.3m
Section articulation	92°/180°/200°/180°/198°
Rotation	370°
Delivery line	125mm
Proportional boom	Yes
End hose length	3.5m
Outrigger spread-front	15.1m Swing type
Outrigger spread-rear	15m Swing type
Total weight	< 59ton
Chassis	MAN TGS 41.510 (510PS, EURO6)

Pump specifications	
Maximum output	170m³/h
Concrete cylinder	Ø230×2,100mm
Stroke per minute	33
Concrete pressure	Max. 85bar
Hopper capacity	0.6m³
S-tube	Ø200×Ø180
Hydraulic pump	Rexroth-A20VLO190
Cycling system	Hydraulic with manual overrides
Max. aggregate size	40mm

► Photos and drawings are for illustrative purpose only. / ► Right to make technical amendments reserved. / ► Both Rexroth and Kawasaki pump cell available. / ► Dimension will vary with different truck makes, models and specifications. / ► Maximum theoretical values listed.



**KCP CONCRETE
PUMPS**

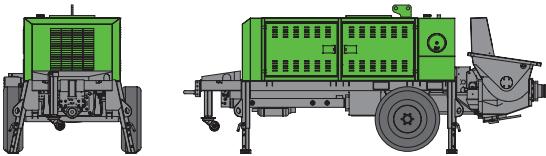
**TRAILER & LINE
PUMPS**



TRAILER PUMPS

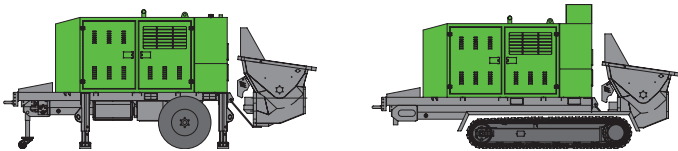
KTP 0705

Maximum Output	52m³/h
Concrete Pressure	70bar
Vertical distance	100m
Horizontal distance	175m
Weight	2,980kg



KTP 0706

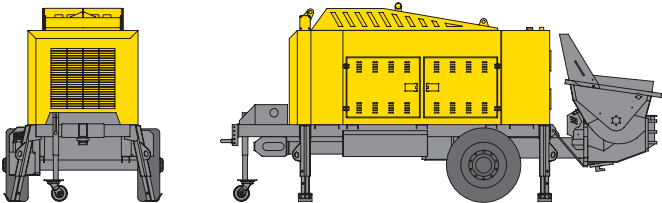
Maximum Output	70m³/h
Concrete Pressure	70bar
Vertical distance	100m
Horizontal distance	175m
Weight	3,900kg (4,900kg)



KTP0706T

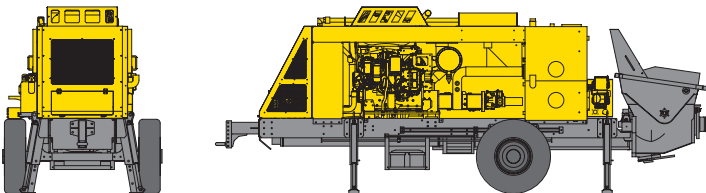
KTP 1310

	High	Low
Maximum Output	64m³/h	84m³/h
Concrete Pressure	126bar	95bar
Vertical distance	180m	135m
Horizontal distance	315m	235m
Weight	5,380kg	5,380kg



KTP 1714

	High	Low
Maximum Output	88m³/h	116m³/h
Concrete Pressure	172bar	130bar
Vertical distance	245m	185m
Horizontal distance	430m	325m
Weight	7,000kg	7,000kg

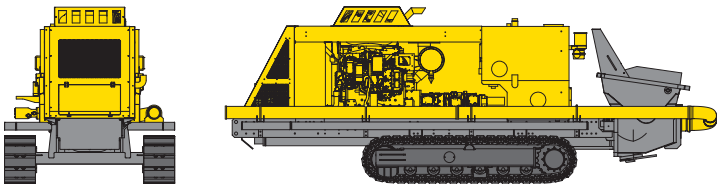


► Photos and drawings are for illustrative purpose only. / ► Right to make technical amendments reserved. / ► Both Rexroth and Kawasaki pump cell available. / ► Dimension will vary with different truck makes, models and specifications. / ► Maximum theoretical values listed.

TRAILER PUMPS

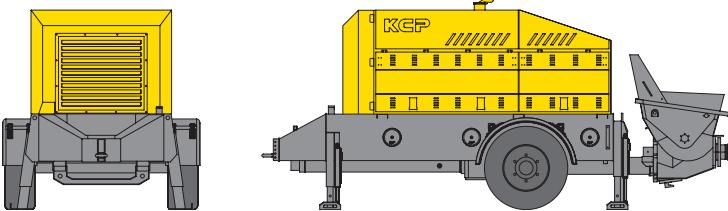
KTP 1714 T

	High	Low
Maximum Output	88m³/h	116m³/h
Concrete Pressure	172bar	130bar
Vertical distance	245m	185m
Horizontal distance	430m	325m
Weight	7,850kg	7,850kg



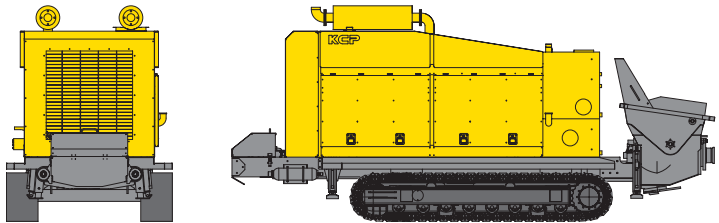
KTP 2210

Maximum Output	105m³/h
Concrete Pressure	224bar
Vertical distance	315m
Horizontal distance	550m
Weight	7,540kg



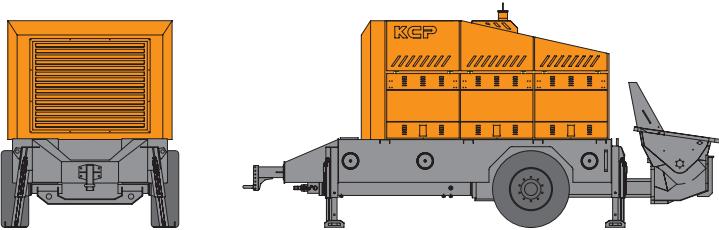
KTP 2210 T

Maximum Output	105m³/h
Concrete Pressure	224bar
Vertical distance	315m
Horizontal distance	550m
Weight	8,700kg



KTP 2812

Maximum Output	78m³/h
Concrete Pressure	285bar
Vertical distance	405m
Horizontal distance	710m
Weight	10,500kg

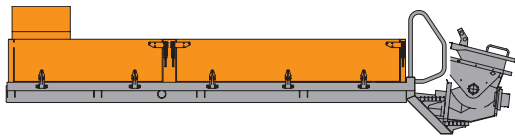


► Photos and drawings are for illustrative purpose only. / ► Right to make technical amendments reserved. / ► Both Rexroth and Kawasaki pump cell available. / ► Dimension will vary with different truck makes, models and specifications. / ► Maximum theoretical values listed.

LINE PUMPS

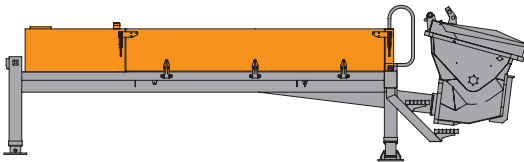
KML 0706

Maximum Output	63m³/h
Concrete Pressure	87bar
Vertical distance	125m
Horizontal distance	215m
Weight	3,360kg



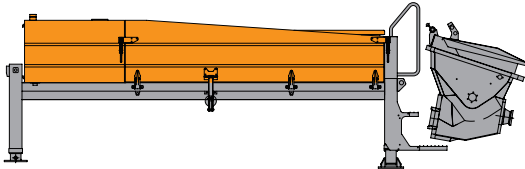
KML 1310

Maximum Output	64m³/h
Concrete Pressure	126bar
Vertical distance	180m
Horizontal distance	315m
Weight	5,280kg



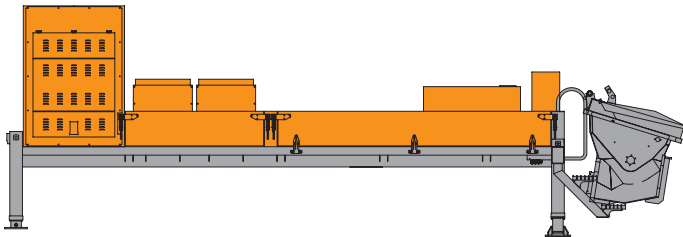
KML 1714

Maximum Output	95m³/h
Concrete Pressure	172bar
Vertical distance	245m
Horizontal distance	430m
Weight	5,380kg



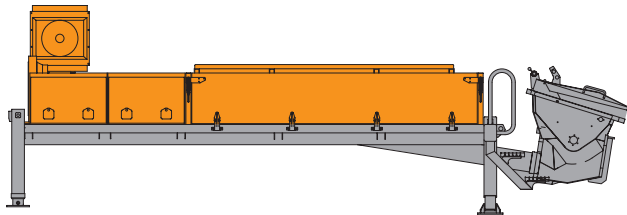
KML 2812 ENGINE

Maximum Output	112m³/h
Concrete Pressure	285bar
Vertical distance	405m
Horizontal distance	710m
Engine/HP	CAT-C7.1 / 300HP
Weight	6,700kg

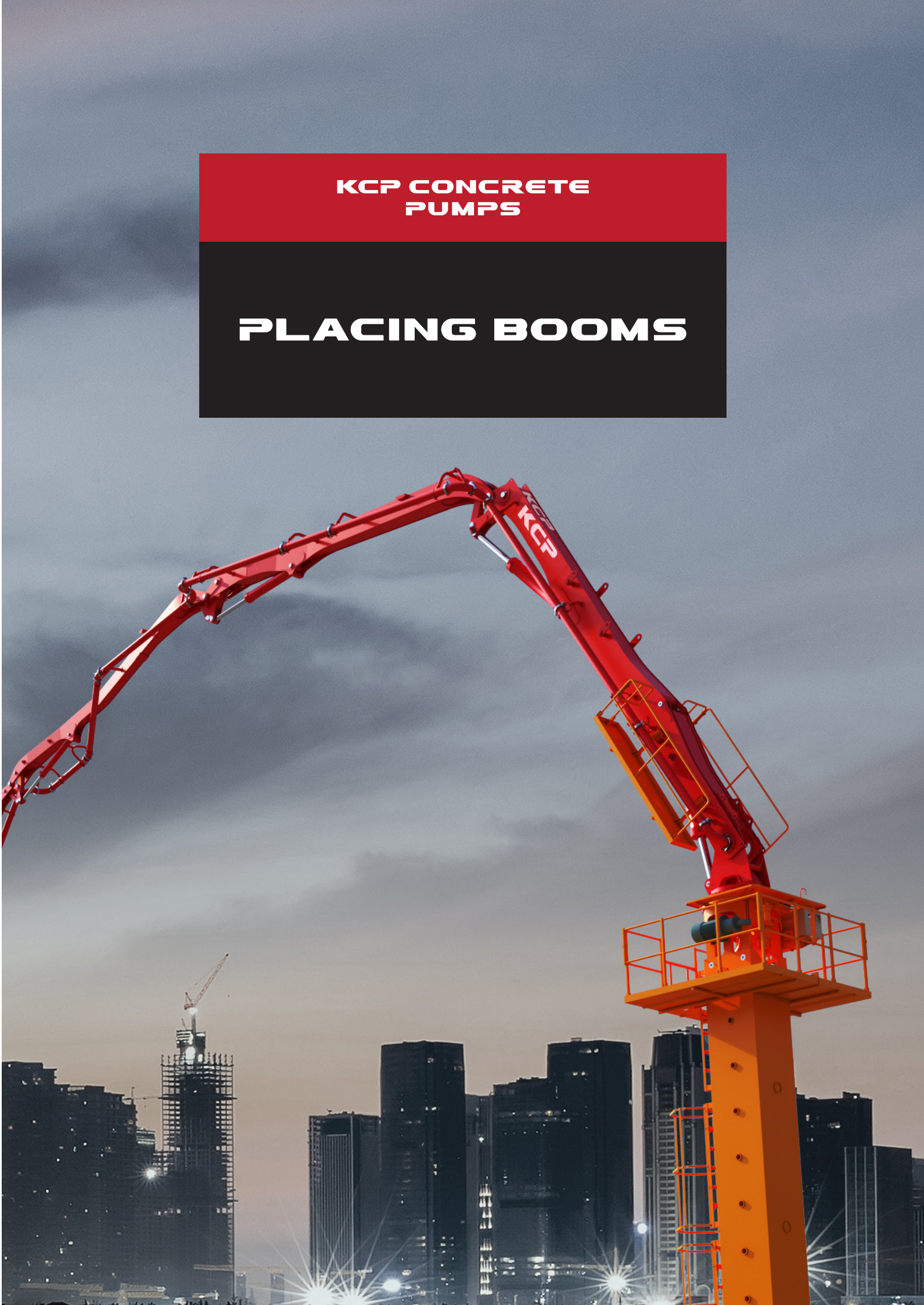


KML 2812 PTO

Maximum Output	75m³/h
Concrete Pressure	285bar
Vertical distance	405m
Horizontal distance	710m
Weight	6,500kg

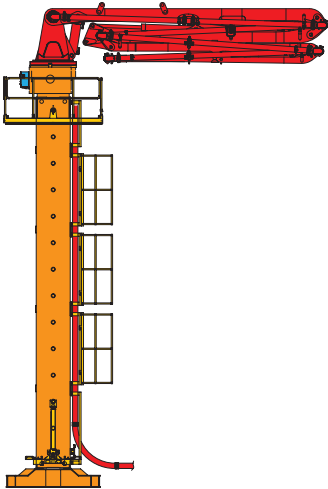


► Photos and drawings are for illustrative purpose only. / ► Right to make technical amendments reserved. / ► Both Rexroth and Kawasaki pump cell available. / ► Dimension will vary with different truck makes, models and specifications. / ► Maximum theoretical values listed.



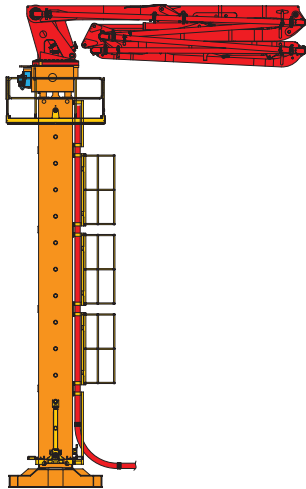
PLACING BOOMS

KB-M24Z



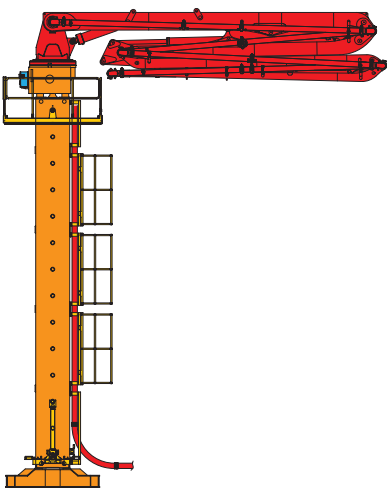
Boom type	4 Section Z type
Horizontal reach	23.2m
Depth reach	19.9m
Delivery line	125mm
End hose length	3m

KB-M27Z



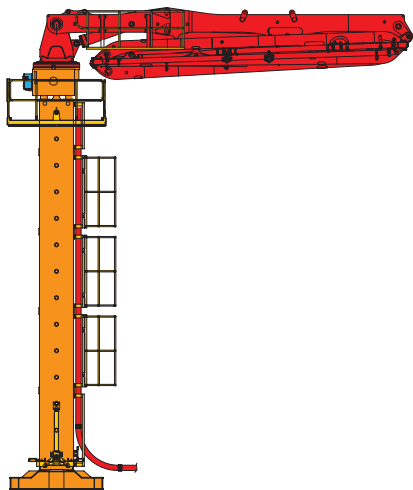
Boom type	5 Section R, Z type
Horizontal reach	26.3m
Depth reach	23.5m
Delivery line	125mm
End hose length	3m

KB-M28Z



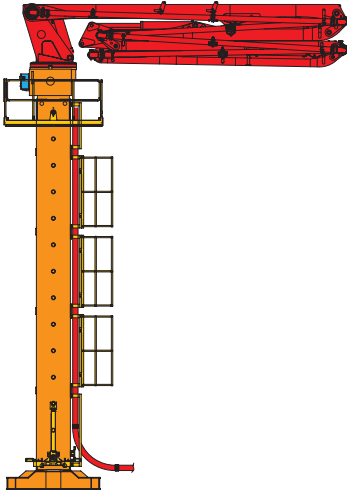
Boom type	4 Section Z type
Horizontal reach	27.64m
Depth reach	23.1m
Delivery line	125mm
End hose length	3m

KB-M32R



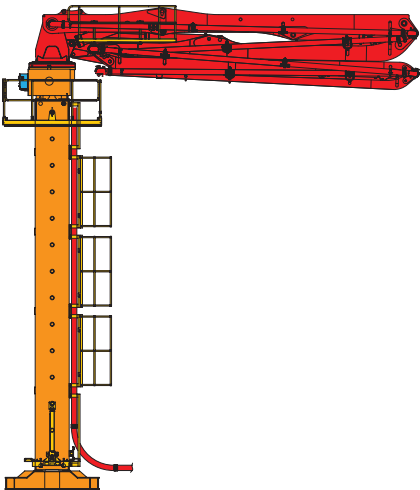
Boom type	4 Section R type
Horizontal reach	32.2m
Depth reach	27.5m
Delivery line	125mm
End hose length	3.5m

KB-M33Z



Boom type	5 Section R, Z type
Horizontal reach	32.1m
Depth reach	28.1m
Delivery line	125mm
End hose length	3.5m

KB-M34Z

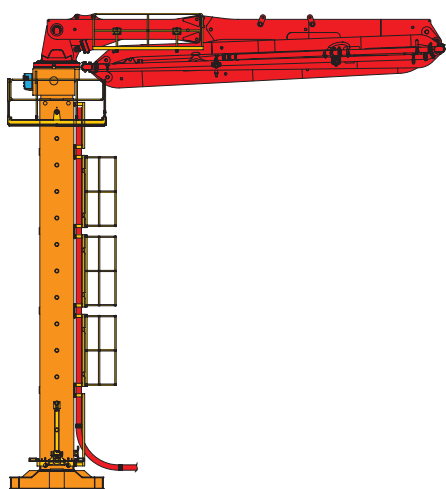


Boom type	4 Section Z type
Horizontal reach	33.1m
Depth reach	28.1m
Delivery line	125mm
End hose length	3.5m

► Photos and drawings are for illustrative purpose only. / ► Right to make technical amendments reserved. / ► Both Rexroth and Kawasaki pump cell available. / ► Dimension will vary with different truck makes, models and specifications. / ► Maximum theoretical values listed.

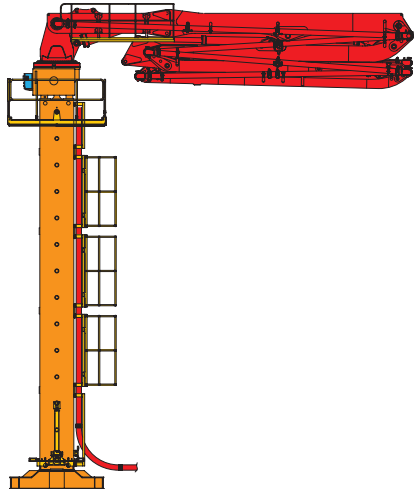
PLACING BOOMS

KB-M36R



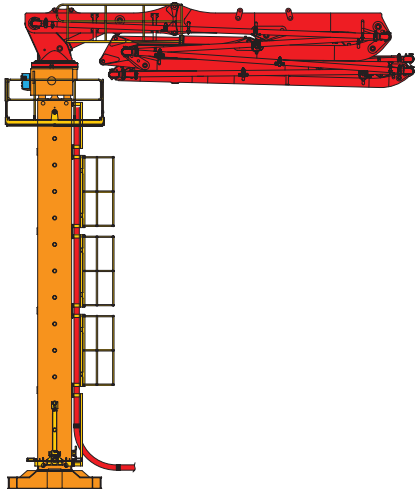
Boom type	4 Section R type
Horizontal reach	35.7m
Depth reach	30.3m
Delivery line	125mm
End hose length	3.5m

KB-M36RZ



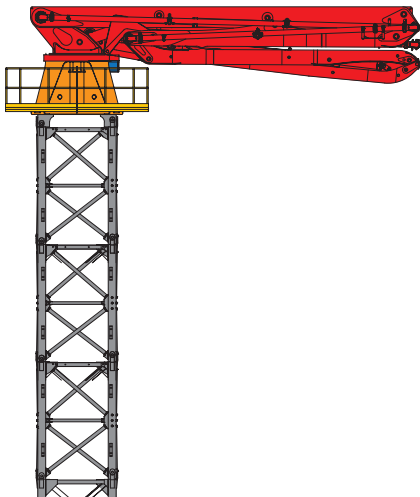
Boom type	5 Section R, Z type
Horizontal reach	35.57m
Depth reach	30.69m
Delivery line	125mm
End hose length	3.5m

KB-M38Z



Boom type	5 Section R, Z type
Horizontal reach	36.9m
Depth reach	32.2m
Delivery line	125mm
End hose length	3.5m

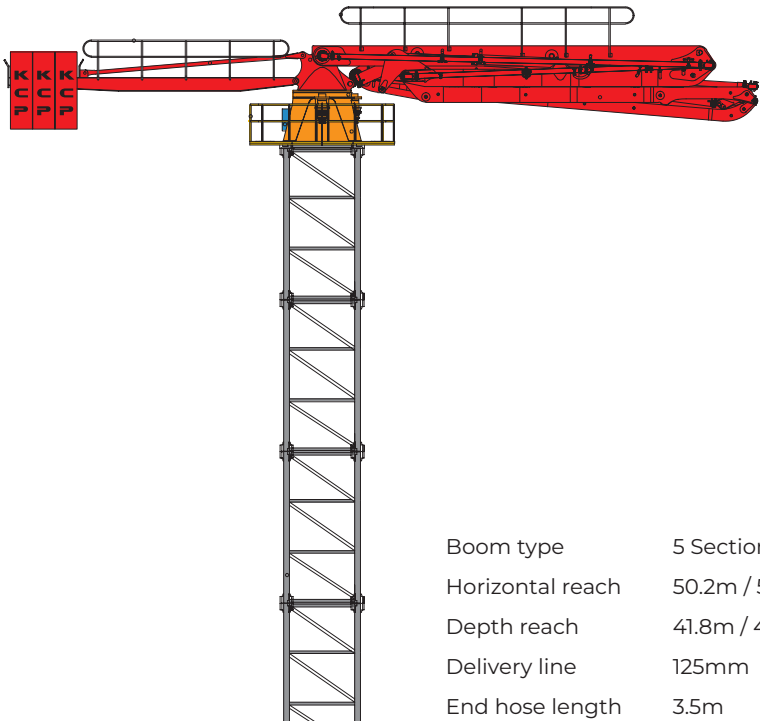
KB-M42Z



Boom type	5 Section R, Z type
Horizontal reach	40.0m
Depth reach	35.4m
Delivery line	125mm
End hose length	3.5m

► Photos and drawings are for illustrative purpose only. / ► Right to make technical amendments reserved. / ► Both Rexroth and Kawasaki pump cell available. / ► Dimension will vary with different truck makes, models and specifications. / ► Maximum theoretical values listed.

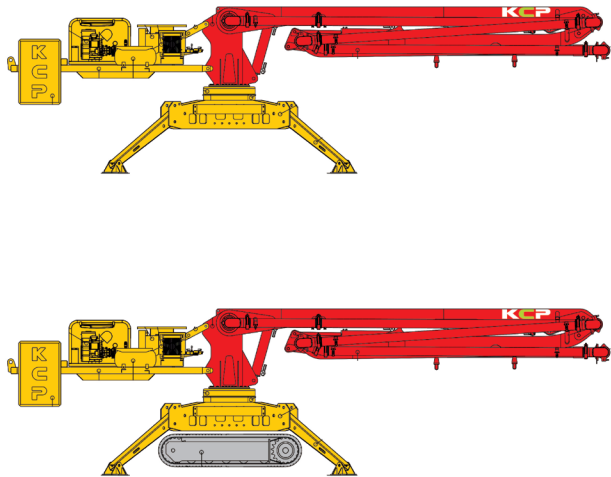
KB-M52RZ / KB-M56RZ



Boom type	5 Section R, Z type
Horizontal reach	50.2m / 53.85m
Depth reach	41.8m / 44.4m
Delivery line	125mm
End hose length	3.5m

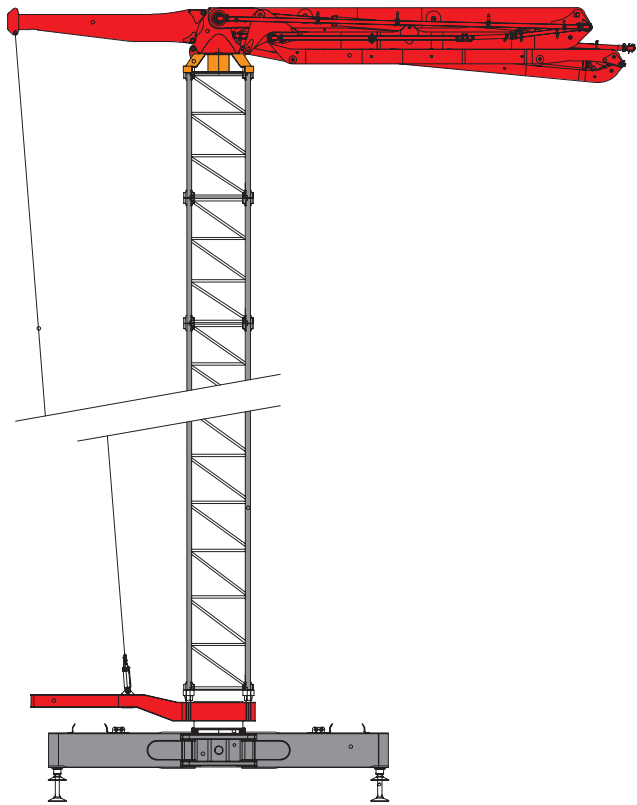
PLACING BOOMS

KS-M15Z



Boom type	3 Section Z type
Horizontal reach	14.8m
Depth reach	10m
Unfolding height	5.11m
Section articulation	92°/190°/265°
Delivery line	125mm
Proportional boom	Yes
End hose length	3.5m
Total weight	5,600kg / Crawler Type : 7,170kg

KB-M60RZ



Boom type	5 Section R, Z type
Horizontal reach	55.9m
Depth reach	45.7m
Delivery line	125mm
End hose length	3.5m

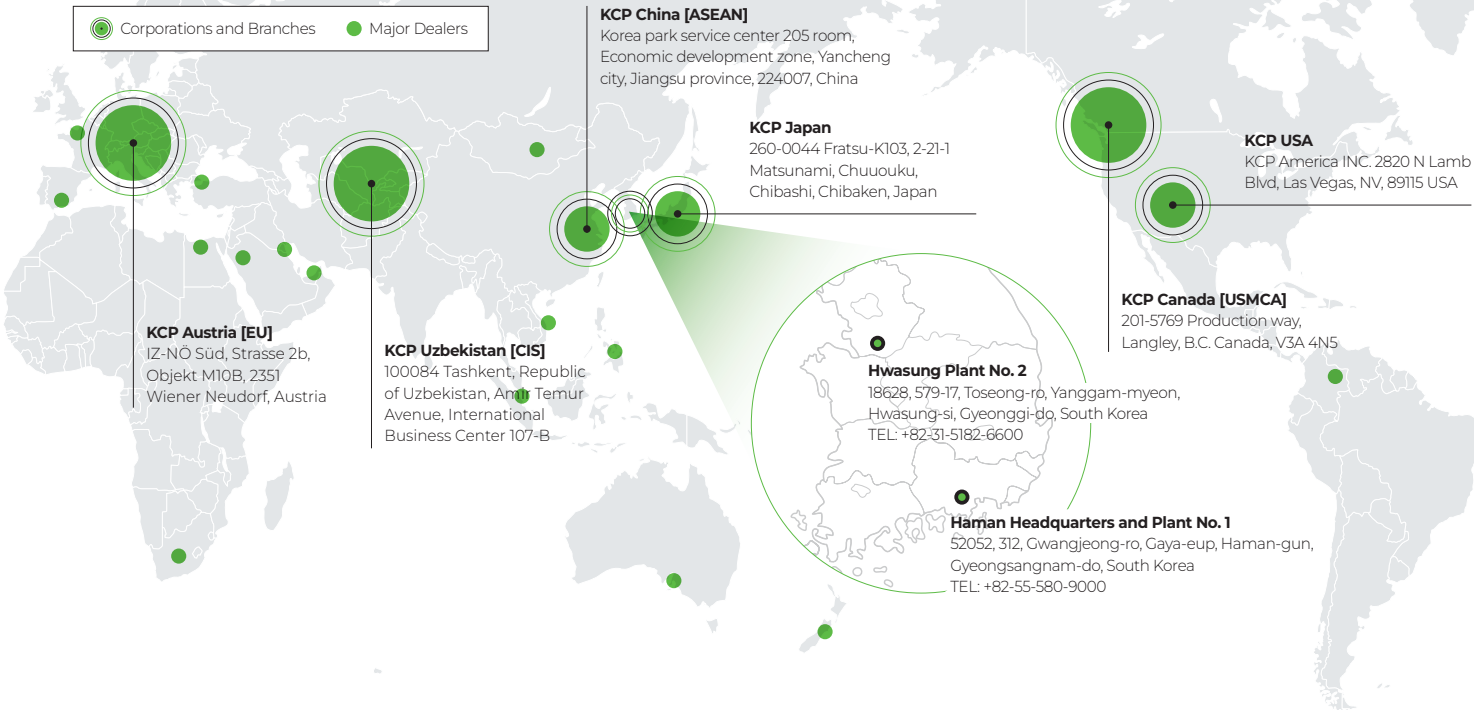
Case Study: Split-Placing Boom Installation

This case highlights the innovative use of a concrete pump truck's boom, detached and installed on a tower mast, to facilitate bridge pier construction. By employing this method, flexible and efficient concrete pouring is achieved, ensuring precision and adaptability for complex construction projects.



► Photos and drawings are for illustrative purpose only. / ► Right to make technical amendments reserved. / ► Both Rexroth and Kawasaki pump cell available. / ► Dimension will vary with different truck makes, models and specifications. / ► Maximum theoretical values listed.

GLOBAL PRESENCE



KCP | Expanding Globally with Local Expertise

With a network of over 50 dealers worldwide and local subsidiaries in Canada (USMCA), Austria (EU), and Uzbekistan (CIS), KCP is committed to delivering high-quality products and building a strong global presence.

We are enhancing our brand power by developing region-specific models and leveraging localized production facilities. To enter new markets, we are increasing direct exports and adopting market-focused sales strategies by partnering with top-tier dealers and cultivating new ones.

Our vision is to transition from domestically-focused production to global production bases, standardize manufacturing technologies and systems, and optimize production efficiency on a global scale.



CONCRETE PUMPING SOLUTIONS FOR ANY PROJECT, ANYTIME



KCP GmbH
EUROPEAN HEADQUARTERS OF KCP

IZ-NÖ Süd, Strasse 2b, Objekt M10B, 2351 Wiener Neudorf, Austria

Tel : +43(0)2236-660685 Fax : +43(0)2236-660685-89 info@kcpeu.com www.kcpeu.com / www.kcppump.com

Specifications in this catalog may be changed without notice to improve machine performance, and photos may have optional features applied, so they may differ from the actual vehicle purchased.

* The color of the photos included in this print may differ slightly from the color of the actual machine due to the production process such as printing.

* Failure to use the parts provided by our company may cause fatal damage to the machine.

Printed on February 10, 2025

bauma
APRIL 7-13, 2025, MUNICH

Copyright © 2025 KCP Co., Ltd. ALL RIGHTS RESERVED.